

NOBLEX

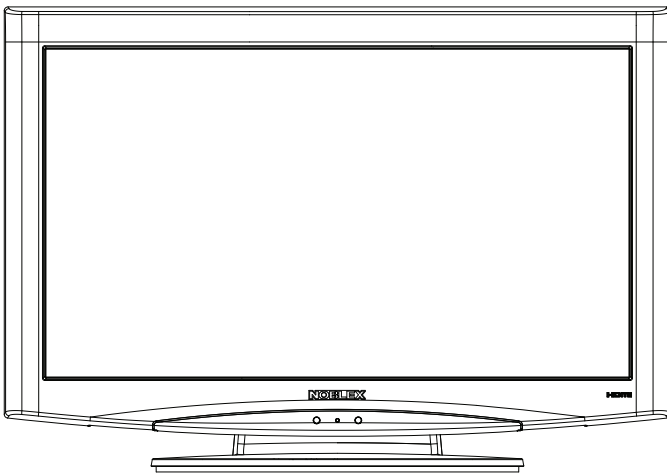
SERVICE MANUAL LCD Television

FILE NO.

Model No. 24LC827H

(Argentina)

Service Ref.No. 24LC827H-00



Product Code: 1-130-259-18

Contents

Safety Notice.....	2
Specifications.....	3
Chassis Block Diagrams.....	4-5
IC Block Diagrams	6-10
On-screen Service Menu System.....	11-15
Service Adjustments.....	16
Mechanical Disassembly.....	17-20
Cabinet Parts List.....	21
Chassis Electrical Parts List.....	22-31
Printed Wiring Board.....	32-36
Schematic Diagram.....	37-39

Original Version

Chassis Series: UE7-M

Give complete "SERVICE REF. NO." for parts order or servicing. It is shown on the rating label at the cabinet back of the unit.

This T.V. receiver will not work properly in foreign countries where the television transmission system and power source differ from the design specifications. Refer to the specification table.

Safety Notice

Safety Precautions

The following precautions must be observed.

1: Comply with all caution and safety-related notes provided on the cabinet back, cabinet bottom, inside the cabinet or on the chassis.

2: When replacing a chassis in the cabinet, always be certain that all the protective devices are installed properly, such as, control knobs, adjustment covers or shields, barriers, etc..

DO NOT OPERATE THIS TELEVISION WITHOUT THE PROTECTIVE SHIELD IN POSITION AND PROPERLY SECURED

3: Before replacing the cabinet cover, thoroughly inspect the inside of the cabinet to see that no stray parts or tools have been left inside.

Before returning any television to the customer, the service personnel must be sure that it is completely safe to operate without danger of electrical shock.

Product Safety Notice

Product safety should be considered when a component replacement is made in any area of a receiver. Components indicated by mark ⚠ in the parts list and the schematic diagram designate components in which safety can be of special significance.

It is particularly recommended that only parts designated on the parts list in this manual be used for component replacement designated by mark ⚠.

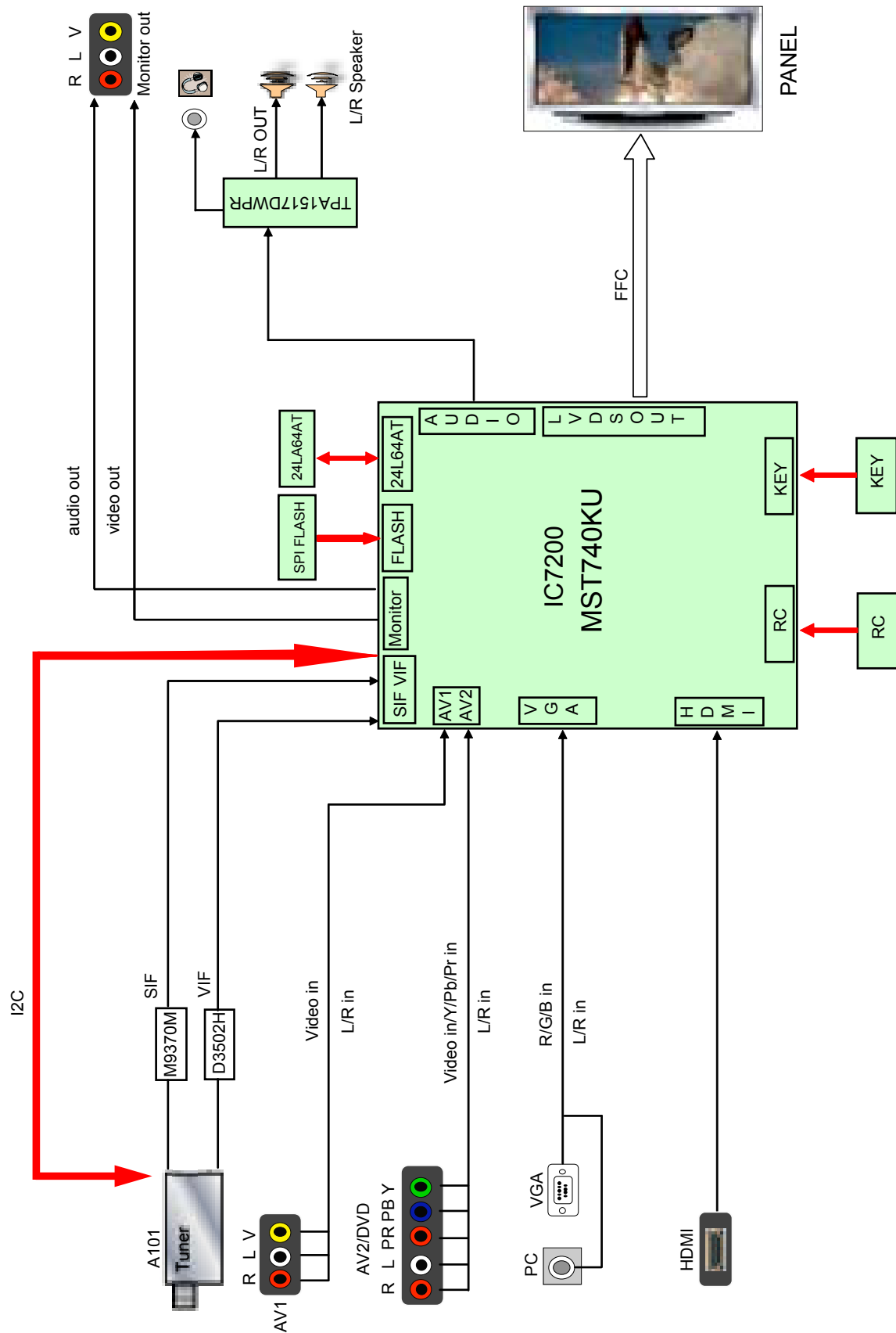
No deviations from resistance wattage or voltage ratings may be made for replacement items designated by mark ⚠.

Specifications

Power Source	AC 110 - 240 Volts, 50/60 Hz
Receiving System	PAL-N, PAL-M, NTSC3.58
Channel Coverage	ANTENNA mode VHF: CH02 - CH13 UHF: CH14 - CH69 CATV mode VHF band: CH01-CH13 MID band: CH14-CH22 SUPER band: CH23-CH36 HYPER band: CH37-CH64 ULTRA band: CH65-CH94 and CH100-CH125 Low MID band: CH95-CH99
Aerial Input Impedance	75 Ω
LCD panel	Screen Size (Measured Diagonally): 24 inches Picture Resolution: WXGA 1366 (Horiz..) x 768 (Vert.) pixels Brightness: 320 cd/m2
Audio Output (RMS)	3 W + 3 W
Speaker Size	Mains: 32.5mm x 87.0mm x 2pcs
Input and Output terminals	
AV1 Input	Video Input: Composite video Input (RCA Jack) x1 Audio Input: L/R Stereo Input (RCA Jack) x 1 set
AV2 Input	Video Input: Component Y (combined with composite video input), CB, CR Input (RCA Jack) x1 set Audio: L/R Stereo Input (RCA Jack) x 1 set
HDMI Input	HDMI Terminal 19 pin x1
PC Input	Video Input: D-SUB 15 pin x1 Audio Input: Mini stereo jack x 1
Output Terminals	Video Monitor Output: RCA jack x 1 Audio Monitor Output: L/R Stereo Output (RCA jack) x 1 set Headphone Jack: Mini stereo jack x1
Dimensions (Width x Height x Depth)	607.8 x 425.1 x 189.8 mm (Including Stand)
Net Weight (Including Stand)	5.4 KG
Environmental Considerations	
Operating Temperature	0°C ~ 40°C (32°F ~ 104°F)
Operating Humidity	20 ~ 80%
Storage Temperature	-10°C ~ 50°C (14°F ~ 122°F)
Storage Humidity	20 ~ 80 %
Accessories	Owner's Manual Remote Control
Place of Production	Argentina

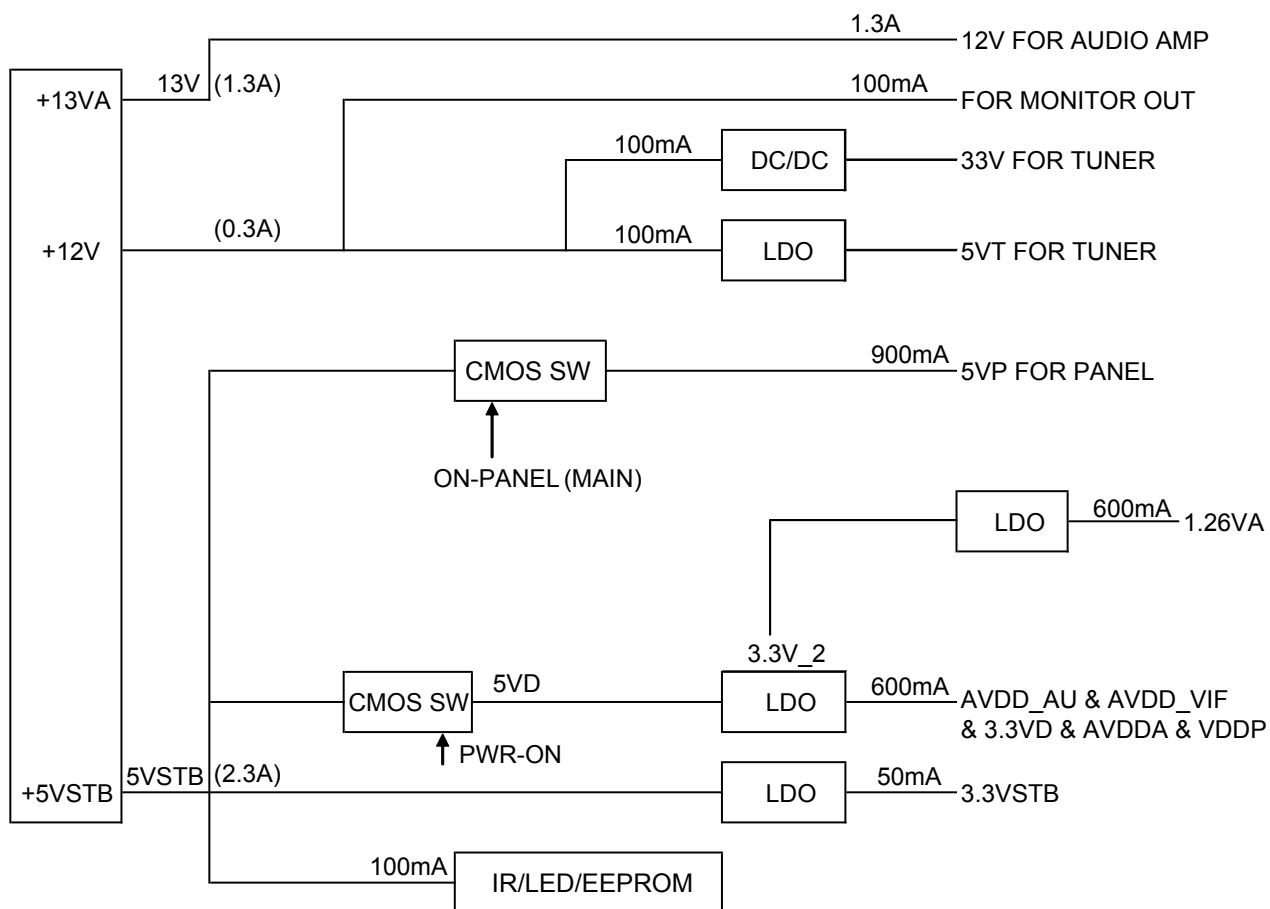
Chassis Block Diagrams

MAIN SIGNAL PROCESSING CIRCUIT



Chassis Block Diagrams

POWER SUPPLY IC



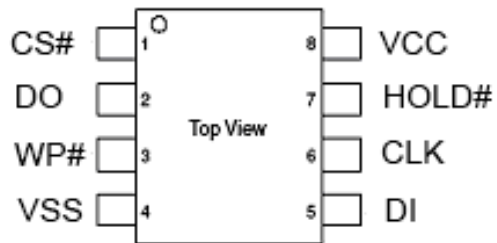
MST740KU



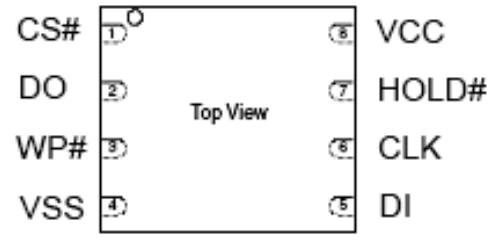
IC Block Diagrams

IC8000

QXXAAJQ1352--

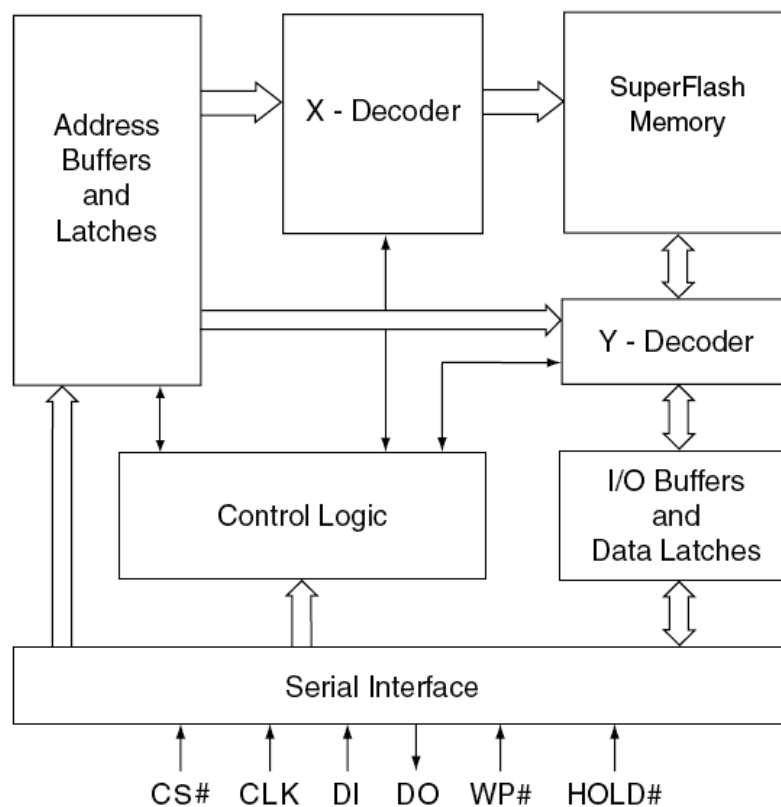


8 - LEAD SOP / PDIP



8 - CONTACT VDFN

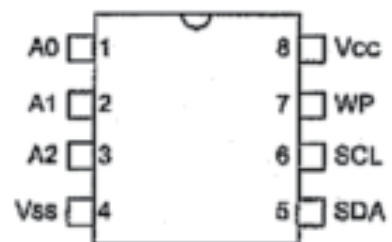
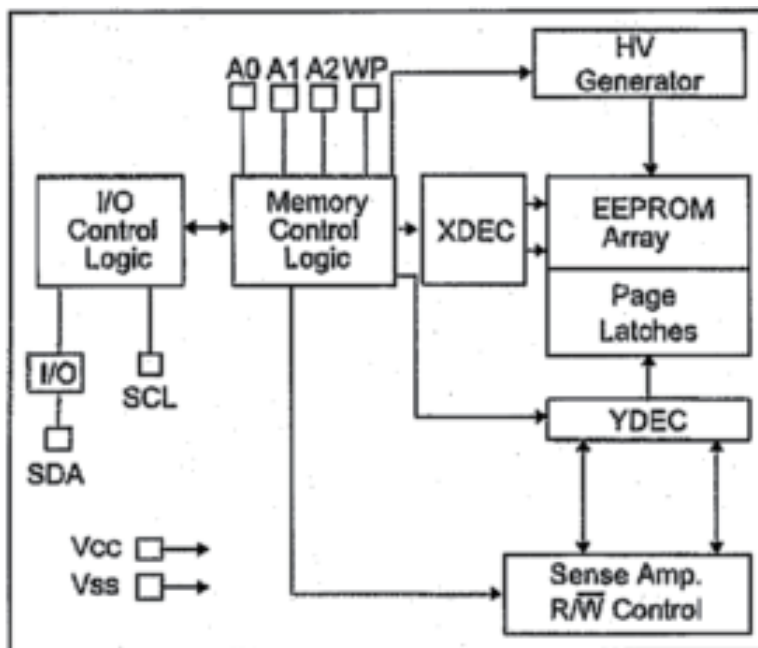
FUNCTIONAL BLOCK DIAGRAM



IC Block Diagrams

IC8001

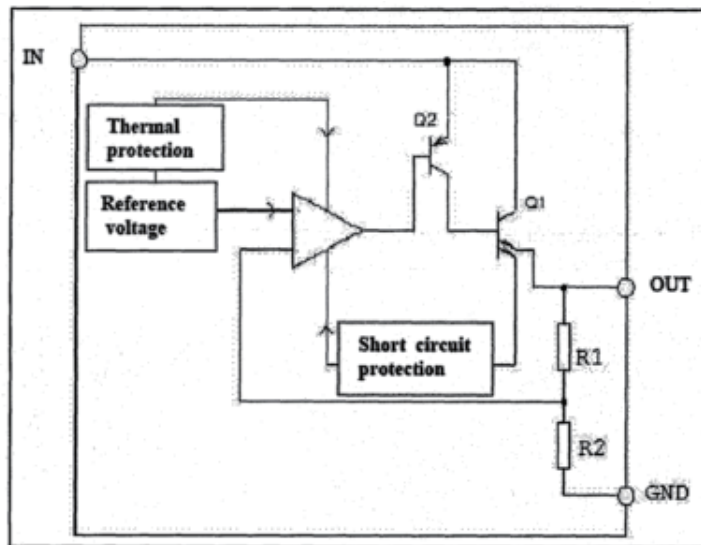
QXXAVC951---P



IC Block Diagrams

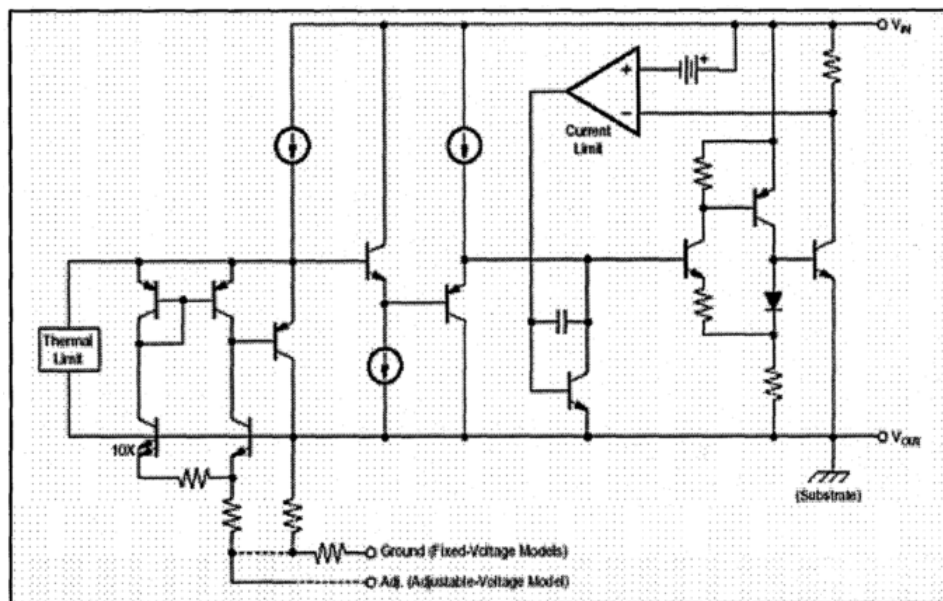
IC7502

QLM1085R-3.3P



IC7504

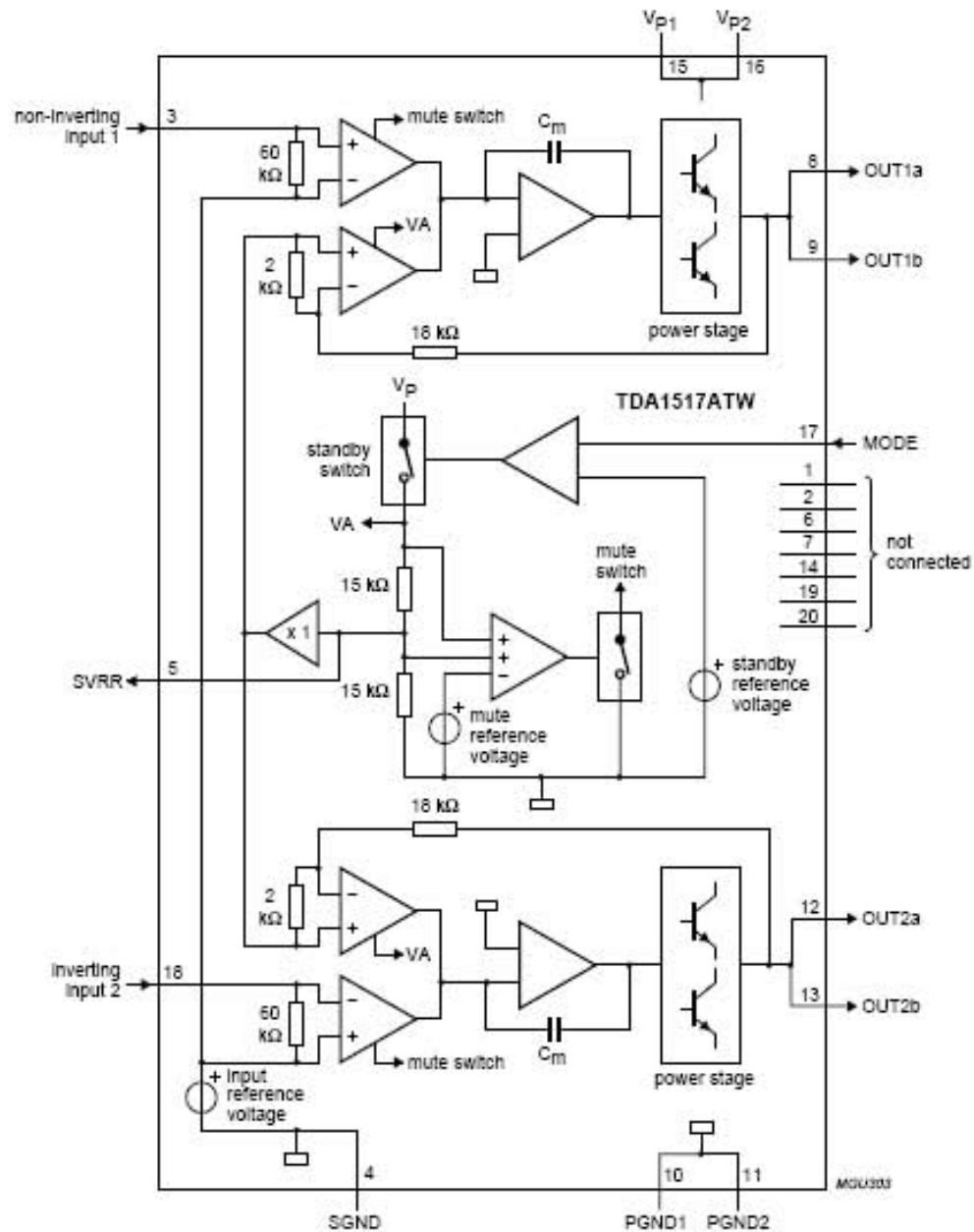
QLM1117S-ADJP



IC Block Diagrams

IC001

QTPA1517DWPRP



On-screen Service Menu System

General

This set has an **On-screen Service Menu System** included in the CPU that allows remote operation for most of the service adjustments.

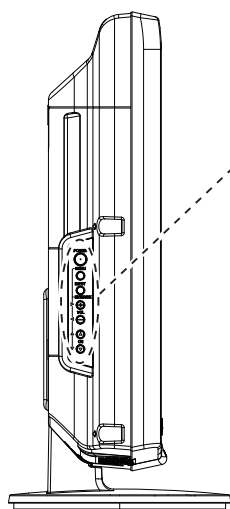
On-screen Service Menu System

Quick operation is needed to enter Service Mode.

■ How to enter the Service Menu

1. Press and hold the **MENU** button on Side Controls.
2. Keep pressing the **MENU** button and press the "**MUTE**" button on the remote control, and the FACTORY MENU will be displayed.
3. Select **SERVICE** by pressing **▲▼** button, and press **◀▶** button to enter.

Side Controls



MENU button
Open or close the On-Screen Menu.

Remote Control



[Service Mode Menu]

SERVICE			
INDEX-000	575i	SUB- CONT	Item Name
ADD	0B60		Address
DATA	FD	1 1 1 1 1 0 1	Data Value

■ How to select the service item and adjust data:

To adjust data:

- 1) Select "**DATA**" line by pressing **▲▼** button.

SERVICE		
INDEX-000	575i	SUB- CONT
ADD	0B60	
DATA	FD	1 1 1 1 1 0 1

- 2) Press **◀▶** button to adjust data.

■ To exit service mode

Press **MENU** button to exit service mode.

Note: The all adjusted data in service mode will be memorized into EEPROM automatically.

On-screen Service Menu System

■ Service Adjustment Data Table

Item Name	Initial Data	IC	Description
575i SUB-CONT	FD	MST740KU	
575i SUB-BRIGHT	FF	MST740KU	DVD Input
575i SUB-COLOR	0B	MST740KU	Input Video Format: 575i
575i SUB-TINT	07	MST740KU	(Different Value)
575i SUB-SHARP	00	MST740KU	
575p SUB-CONT	FD	MST740KU	
575p SUB-BRIGHT	FF	MST740KU	DVD Input
575p SUB-COLOR	0B	MST740KU	Input Video Format: 575p
575p SUB-TINT	07	MST740KU	(Different Value)
575p SUB-SHARP	00	MST740KU	
480i SUB-CONT	FD	MST740KU	
480i SUB-BRIGHT	FF	MST740KU	DVD Input
480i SUB-COLOR	0B	MST740KU	Input Video Format: 480i
480i SUB-TINT	07	MST740KU	(Different Value)
480i SUB-SHARP	00	MST740KU	
480p SUB-CONT	FD	MST740KU	
480p SUB-BRIGHT	FF	MST740KU	DVD Input
480p SUB-COLOR	0B	MST740KU	Input Video Format: 480p
480p SUB-TINT	07	MST740KU	(Different Value)
480p SUB-SHARP	04	MST740KU	
1080i(50) SUB-CONT	FD	MST740KU	
1080i(50) SUB-BRIGHT	FF	MST740KU	DVD Input
1080i(50) SUB-COLOR	0B	MST740KU	Input Video Format:1080i(50)
1080i(50) SUB-TINT	07	MST740KU	(Different Value)
1080i(50) SUB-SHARP	00	MST740KU	
1080i(60) SUB-CONT	01	MST740KU	
1080i(60) SUB-BRIGHT	FE	MST740KU	DVD Input
1080i(60) SUB-COLOR	0B	MST740KU	Input Video Format: 1080i(60)
1080i(60) SUB-TINT	07	MST740KU	(Different Value)
1080i(60) SUB-SHARP	00	MST740KU	
720p50 SUB-CONT	FE	MST740KU	DVD Input
720p50 SUB-BRIGHT	FE	MST740KU	Input Video Format: 720p(50)
720p50 SUB-COLOR	0B	MST740KU	(Different Value)
720p50 SUB-TINT	07	MST740KU	
720p50 SUB-SHARP	00	MST740KU	
720p60 SUB-CONT	FD	MST740KU	DVD Input
720p60 SUB-BRIGHT	FF	MST740KU	Input Video Format: 720p(60)
720p60 SUB-COLOR	0B	MST740KU	(Different Value)
720p60 SUB-TINT	07	MST740KU	
720p60 SUB-SHARP	00	MST740KU	
1080P(50) SUB-CONT	FF	MST740KU	DVD Input
1080P(50) SUB-BRIGHT	FF	MST740KU	Input Video Format: 1080P(50)
1080P(50) SUB-COLOR	0B	MST740KU	(Different Value)
1080P(50) SUB-TINT	07	MST740KU	
1080P(50) SUB-SHARP	00	MST740KU	
1080P(60) SUB-CONT	FF	MST740KU	DVD Input
1080P(60) SUB-BRIGHT	FF	MST740KU	Input Video Format: 1080P(60)
1080P(60) SUB-COLOR	0B	MST740KU	(Different Value)
1080P(60) SUB-TINT	07	MST740KU	
1080P(60) SUB-SHARP	00	MST740KU	
PC SUB-CONT	08	MST740KU	
PC SUB-BRIGHT	01	MST740KU	
PC SUB-COLOR	00	MST740KU	PC Input
PC SUB-TINT	00	MST740KU	(Different Value)

On-screen Service Menu System

Item Name	Initial Data	IC	Description
PC SUB-SHARP	00	MST740KU	
DVI SUB-CONT	16	MST740KU	
DVI SUB-BRIGHT	FA	MST740KU	
DVI SUB-COLOR	00	MST740KU	DVI Input
DVI SUB-TINT	04	MST740KU	(Different Value)
DVI SUB-SHARP	03	MST740KU	
AV-PAL-N BASE-CONT	4E	MST740KU	
AV-PAL-N BASE-BRIGHT	4B	MST740KU	
AV-PAL-N BASE-COLOR	00	MST740KU	Input Alteration: VIDEO(PALN)
AV-PAL-N BASE-TINT	00	MST740KU	(BASE)
AV-PAL-N BASE-SHARP	00	MST740KU	
AV-N SUB-CONT	07	MST740KU	
AV-N SUB-BRIGHT	00	MST740KU	
AV-N SUB-COLOR	00	MST740KU	Input Alteration: VIDEO(NTSC)
AV-N SUB-TINT	00	MST740KU	(Different Value)
AV-N SUB-SHARP	00	MST740KU	
AV-PALM SUB-CONT	FA	MST740KU	
AV-PALM SUB-BRIGHT	0A	MST740KU	
AV-PALM SUB-COLOR	00	MST740KU	Input Alteration: VIDEO(PALM)
AV-PALM SUB-TINT	00	MST740KU	(Different Value)
AV-PALM SUB-SHARP	00	MST740KU	
S(50) SUB-CONT	F7	MST740KU	
S(50) SUB-BRIGHT	00	MST740KU	
S(50) SUB-COLOR	00	MST740KU	Input Alteration:S-VIDEO(50)
S(50) SUB-TINT	00	MST740KU	(Different Value)
S(50) SUB-SHARP	00	MST740KU	
S(60) SUB-CONT	00	MST740KU	
S(60) SUB-BRIGHT	FB	MST740KU	
S(60) SUB-COLOR	00	MST740KU	Input Alteration:S VIDEO(60)
S(60) SUB-TINT	00	MST740KU	(Different Value)
S(60) SUB-SHARP	00	MST740KU	
REF-PALN SUB-CONT	06	MST740KU	
REF-PALN SUB-BRIGHT	0B	MST740KU	
REF-PALN SUB-COLOR	00	MST740KU	Input Alteration: RF(PALN)
REF-PALN SUB-TINT	FC	MST740KU	(Different Value)
REF-PALN SUB-SHARP	0E	MST740KU	
REF-N SUB-CONT	06	MST740KU	
REF-N SUB-BRIGHT	FD	MST740KU	
REF-N SUB-COLOR	00	MST740KU	Input Alteration: RF(NTSC)
REF-N SUB-TINT	F8	MST740KU	(Different Value)
REF-N SUB-SHARP	0E	MST740KU	
REF-PALM SUB-CONT	02	MST740KU	
REF-PALM SUB-BRIGHT	11	MST740KU	
REF-PALM SUB-COLOR	00	MST740KU	Input Alteration: RF(PALM)
REF-PALM SUB-TINT	FC	MST740KU	(Different Value)
REF-PALM SUB-SHARP	0E	MST740KU	
White-575i R	0A	MST740KU	
White-575i G	0A	MST740KU	
White-575i B	0A	MST740KU	DVD Input: 575i
Black-575i R	00	MST740KU	(Different Value)
Black-575i G	00	MST740KU	
Black-575i B	00	MST740KU	
White-575p R	0A	MST740KU	
White-575p G	0A	MST740KU	
White-575p B	0A	MST740KU	DVD Input: 575p
Black-575p R	00	MST740KU	(Different Value)

On-screen Service Menu System

Item Name	Initial Data	IC	Description
Black-575p G	00	MST740KU	
Black-575p B	00	MST740KU	
White-480i R	0A	MST740KU	
White-480i G	0A	MST740KU	
White-480i B	0A	MST740KU	DVD Input: 480i
Black-480i R	00	MST740KU	(Different Value)
Black-480i G	00	MST740KU	
Black-480i B	00	MST740KU	
White-480p R	0A	MST740KU	
White-480p G	0A	MST740KU	
White-480p B	0A	MST740KU	DVD Input: 480p
Black-480p R	00	MST740KU	(Different Value)
Black-480p G	00	MST740KU	
Black-480p B	00	MST740KU	
White-1080I (50)R	0A	MST740KU	
White-1080I (50)G	0A	MST740KU	
White-1080I (50)B	0A	MST740KU	DVD Input: 1080I (50)
Black-1080I (50)R	00	MST740KU	(Different Value)
Black-1080I (50)G	00	MST740KU	
Black-1080I (50)B	00	MST740KU	
White-1080I (60)R	0A	MST740KU	
White-1080I (60)G	0A	MST740KU	
White-1080I (60)B	0A	MST740KU	DVD Input: 1080I (60)
Black-1080I (60)R	00	MST740KU	(Different Value)
Black-1080I (60)G	00	MST740KU	
Black-1080I (60)B	00	MST740KU	
White-720P (50)R	0A	MST740KU	
White-720P (50)G	0A	MST740KU	
White-720P (50)B	0A	MST740KU	DVD Input: 720P(50)
Black-720P (50)R	00	MST740KU	(Different Value)
Black-720P (50) G	00	MST740KU	
Black-720P (50) B	00	MST740KU	
White-720P (60) R	0A	MST740KU	
White-720P (60) G	0A	MST740KU	
White-720P (60) B	0A	MST740KU	DVD Input: 720P(60)
Black-720P (60) R	00	MST740KU	(Different Value)
Black-720P (60) G	00	MST740KU	
Black-720P (60) B	00	MST740KU	
White-1080P(50) R	0A	MST740KU	
White-1080P(50) G	0A	MST740KU	
White-1080P(50) B	0A	MST740KU	DVD Input: 1080P(50)
Black-1080P(50) R	00	MST740KU	(Different Value)
Black-1080P(50) G	00	MST740KU	
Black-1080P(50) B	00	MST740KU	
White-1080P(60) R	0A	MST740KU	
White-1080P(60) G	0A	MST740KU	
White-1080P(60) B	0A	MST740KU	DVD Input: 1080P(60)
Black-1080P(60) R	00	MST740KU	(Different Value)
Black-1080P(60) G	00	MST740KU	
Black-1080P(60) B	00	MST740KU	
White-PC R	00	MST740KU	
White-PC G	00	MST740KU	
White-PC B	00	MST740KU	PC Input
Black-PC R	00	MST740KU	(Different Value)
Black-PC G	00	MST740KU	
Black-PC B	00	MST740KU	

On-screen Service Menu System

Item Name	Initial Data	IC	Description
White-DVI R	00	MST740KU	DVI Input (Different Value)
White-DVI G	00	MST740KU	
White-DVI B	00	MST740KU	
Black-DVI R	00	MST740KU	
Black-DVI G	00	MST740KU	
Black-DVI B	00	MST740KU	
White-AV-PALM R	00	MST740KU	VIDEO Input→PALM (Different Value)
White-AV-PALM G	00	MST740KU	
White-AV-PALM B	00	MST740KU	
Black-AV-PALM R	00	MST740KU	
Black-AV-PALM G	00	MST740KU	
Black-AV-PALM B	00	MST740KU	
White-AV-NTSC R	00	MST740KU	VIDEO Input→NTSC (Different Value)
White-AV-NTSC G	00	MST740KU	
White-AV-NTSC B	00	MST740KU	
Black-AV-NTSC R	00	MST740KU	
Black-AV-NTSC G	00	MST740KU	
Black-AV-NTSC B	00	MST740KU	
BASEWhite-AV-PALN R	75	MST740KU	VIDEO Input→PALN (BASE)
BASEWhite-AV-PALN G	75	MST740KU	
BASEWhite-AV-PALN B	75	MST740KU	
BASEBlack-AV-PALN R	80	MST740KU	
BASEBlack-AV-PALN G	80	MST740KU	
BASEBlack-AV-PALN B	80	MST740KU	
White-SV(50) -PAL R	00	MST740KU	S-Video Input(50) (Different Value)
White-SV(50) -PAL G	00	MST740KU	
White-SV(50) -PAL B	00	MST740KU	
Black-SV(50) -PAL R	00	MST740KU	
Black-SV(50) -PAL G	00	MST740KU	
Black-SV(50) -PAL B	00	MST740KU	
White-S(60) -NTSC R	00	MST740KU	S-Video Input(60) (Different Value)
White-S(60) -NTSC G	00	MST740KU	
White-S(60) -NTSC B	00	MST740KU	
Black-S(60) -NTSC R	00	MST740KU	
Black-S(60) -NTSC G	00	MST740KU	
Black-S(60) -NTSC B	00	MST740KU	
White-REF-PALM R	00	MST740KU	TV Input(PALM) (Different Value)
White-REF-PALM G	00	MST740KU	
White-REF-PALM B	00	MST740KU	
Black-REF-PALM R	00	MST740KU	
Black-REF-PALM G	00	MST740KU	
Black-REF-PALM B	00	MST740KU	
White-REF-NTSC R	00	MST740KU	TV Input(NTSC) (Different Value)
White-REF-NTSC G	00	MST740KU	
White-REF-NTSC B	00	MST740KU	
Black-REF-NTSC R	00	MST740KU	
Black-REF-NTSC G	00	MST740KU	
Black-REF-NTSC B	00	MST740KU	
White-REF-PALN R	00	MST740KU	TV Input(PALN) (Different Value)
White-REF-PALN G	00	MST740KU	
White-REF-PALN B	00	MST740KU	
Black-REF-PALN R	00	MST740KU	
Black-REF-PALN G	00	MST740KU	
Black-REF-PALN B	00	MST740KU	
EDID-YEAR	15		HDMI,VGA EDID YEAR 13h~19h
KEYWORD	BF		SSTC DATA INITIALIZE KEYWORD

Service Adjustments

CAUTION !

Do not attempt to adjust service adjustments not listed below otherwise it may cause loss of performance and for correct operation.

■ Setting the Initial data

This adjustment is controlled by the CPU (IC8000) through the IIC Bus Data Line in the chassis, and those adjustment data are memorized the memory IC (IC7200). Therefore, Main board or the memory IC (IC7200) is replaced, these data will be disappeared. Readjust should be made. Initial data is provided in the CPU ROM, when the memory IC (IC7200) is replaced with new one. CPU ROM data is loaded into the memory. Initial data is provided to operating the monitor basically. For operating the monitor quality performance, further adjustment is required following chassis electrical adjustment.

1. Receive good quality signal.
2. Enter the Service Mode.
3. Confirm data value to be the same as the **Service Adjustment Data Table**. If it is different, change to correct data
4. Exit the Service Mode.

■ White and Black Balance Adjustment

Pattern

White Pattern 100% (in AV mode).

Condition

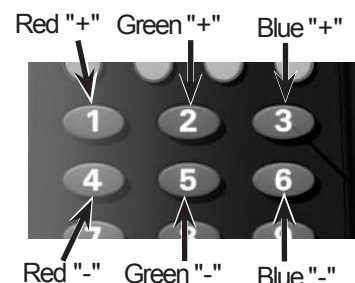
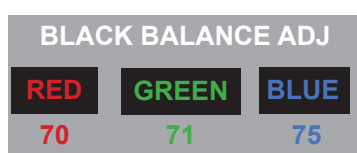
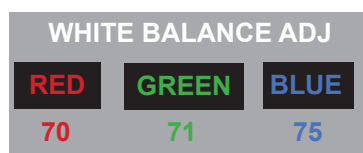
Picture Mode: STANDARD

Color Temperature: NORMAL

Pre-heating Time: More than 10 minutes

Adjustment

1. Enter the FACTORY MENU.
2. Select **WHITE BALANCE / BLACK BALANCE** by pressing ▲▼ button, and press ◀▶ button to enter.
3. Set R,G,B value to "FF" by pressing NUMERIC buttons.
To adjust Red : Press **1** (data value up) and **4** (data value down).
To adjust Green : Press **2** (data value up) and **5** (data value down).
To adjust Blue : Press **3** (data value up) and **6** (data value down).



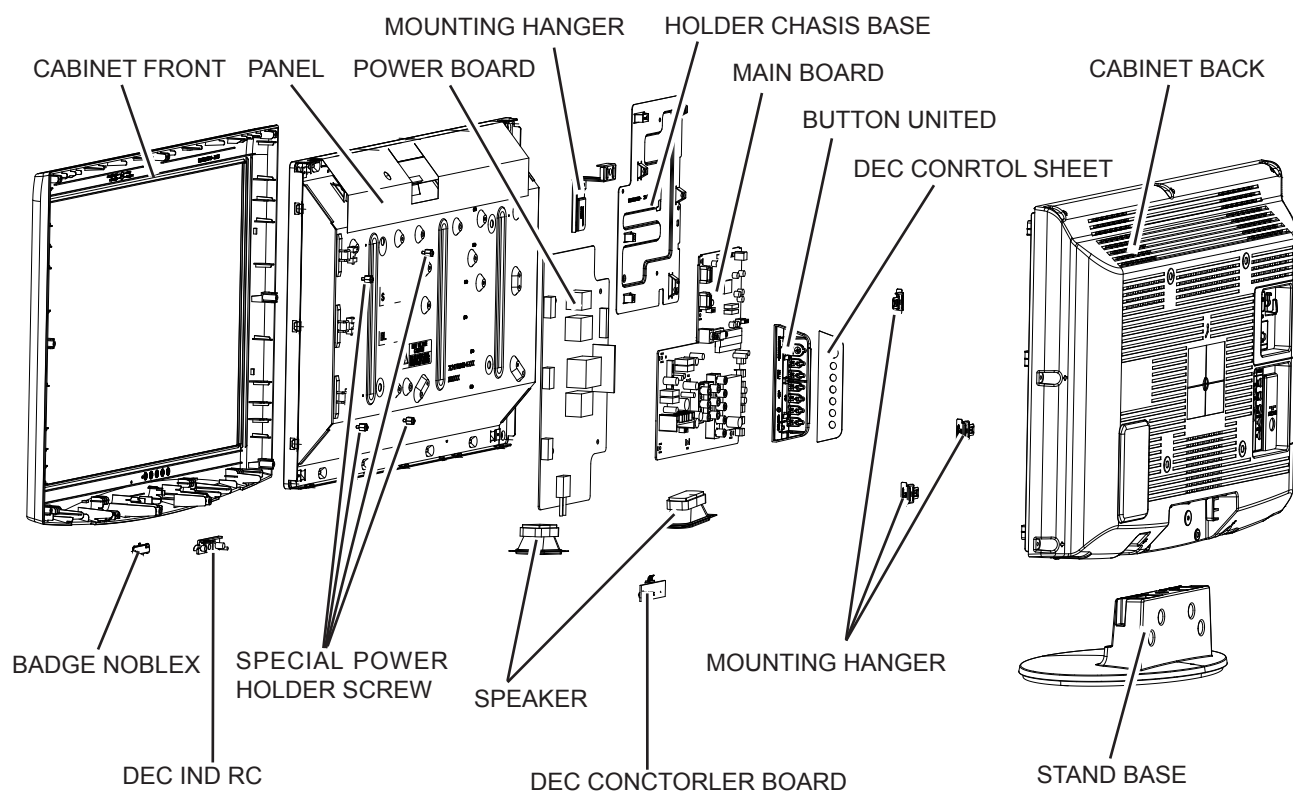
4. Decide one item in three items to a fixed value (For example, let **R** be fixed value), select item of other 2 colors (Example, **G** or **B**), and adjust to produce a normal black and white picture in highlight areas.
(**Note:** At this time, Adjust the other 2 colors data less than fixed data.)

5. Exit the Service Mode.

After adjustment, confirm white balance again by normal picture.

Mechanical Disassembly

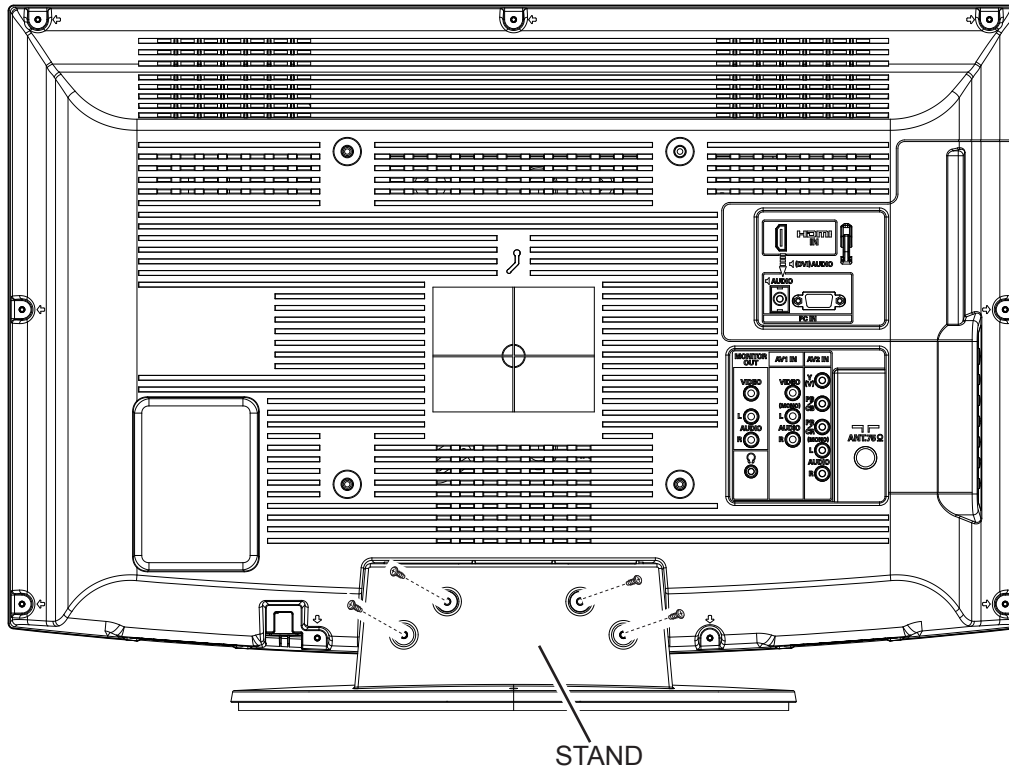
[Disassembly Diagram]



Mechanical Disassembly

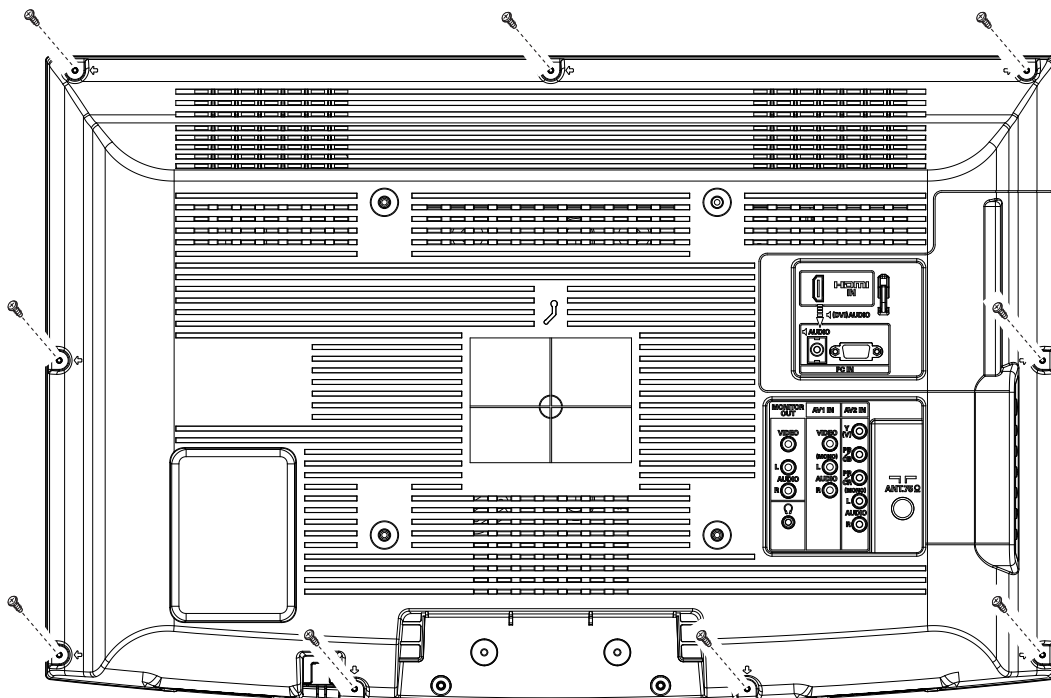
1. STAND Removal

1. Remove 4 screws and remove the STAND.



2. CABINET BACK Removal

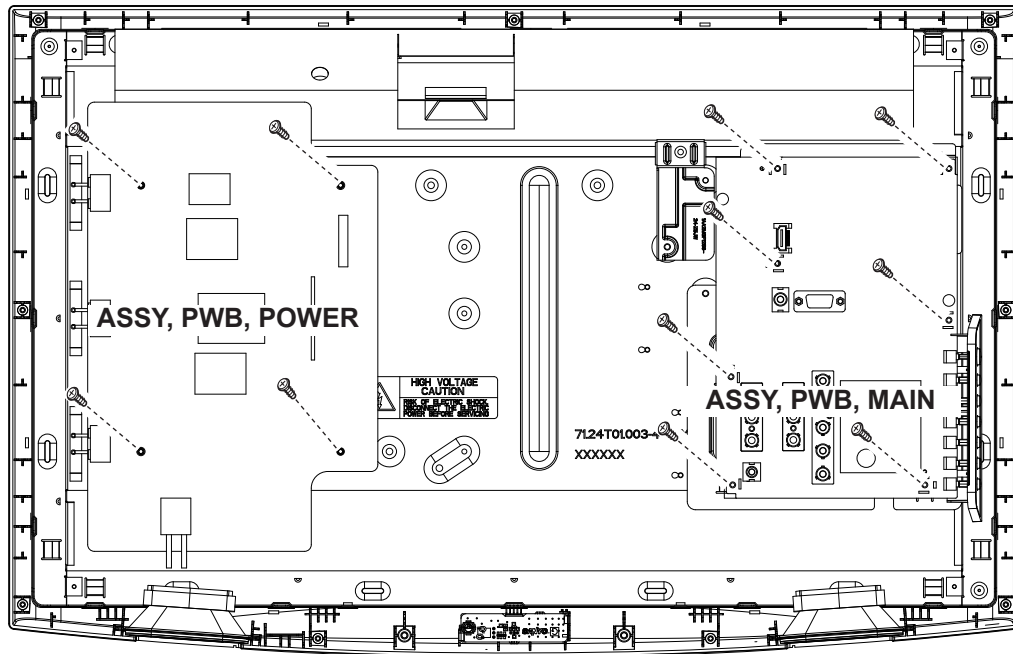
1. Remove 9 screws and take the **CABINET BACK** off.



Mechanical Disassembly

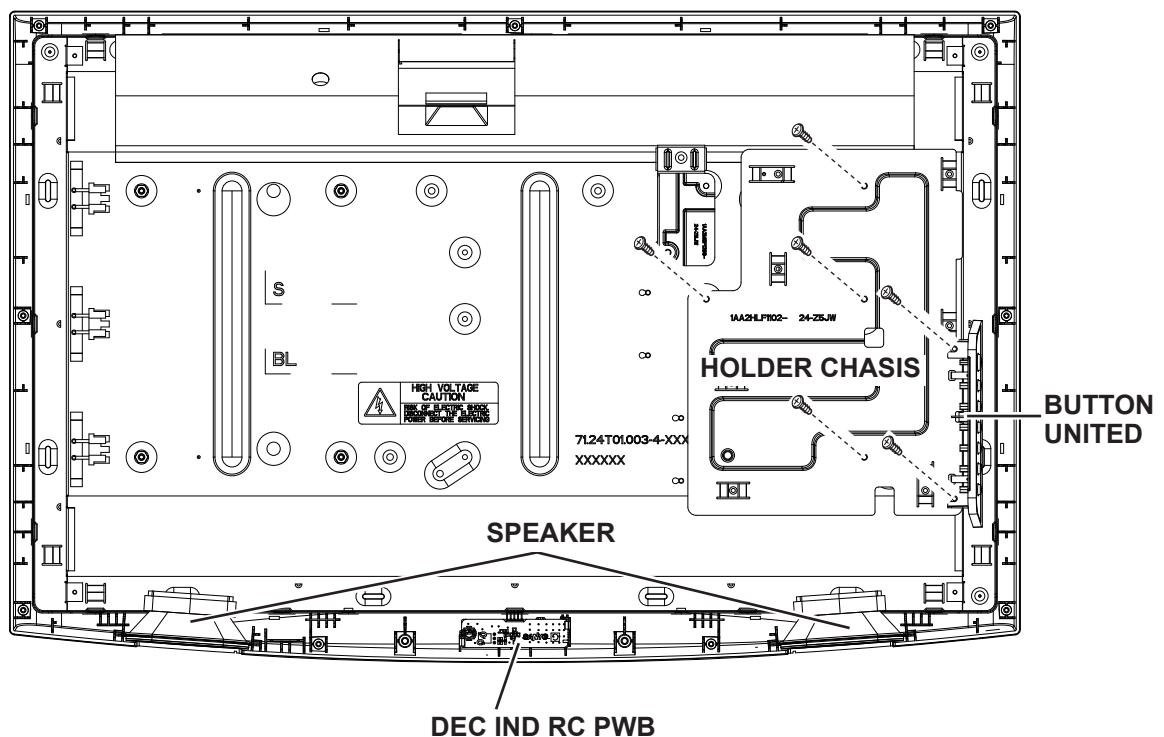
3. ASSY, PWB, POWER Board and ASSY, PWB, MAIN Board Removal

1. Remove 4 screws and take **ASSY, PWB, POWER** off.
2. Remove 7 screws and take **ASSY, PWB, MAIN** off.



4. DEC IND RC Board, SPEAKER, BUTTON UNITED and HOLDER CHASIS Removal

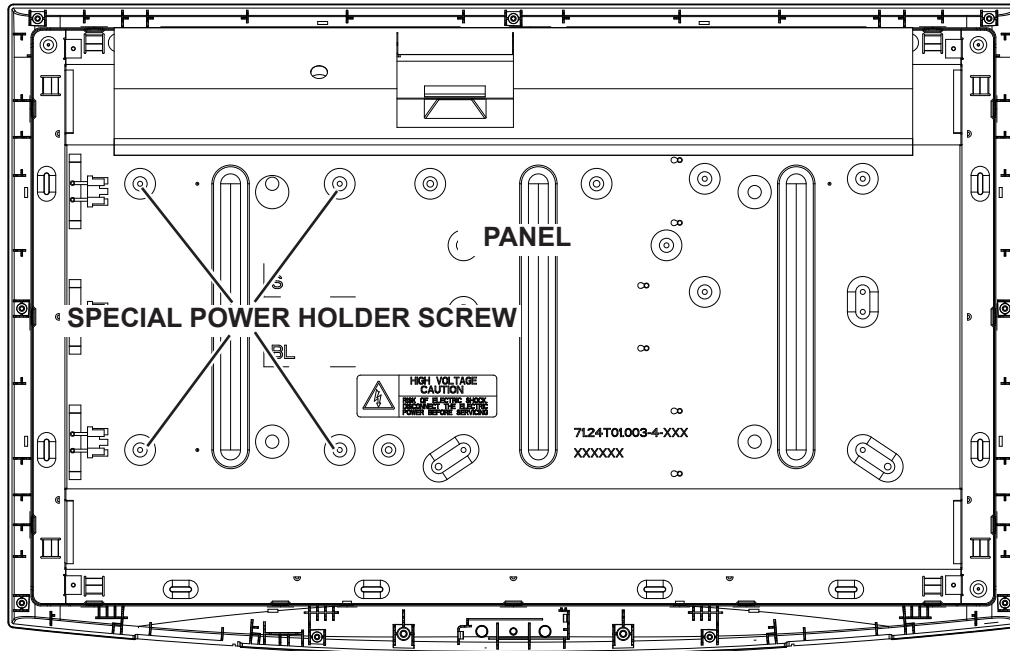
1. Take the **DEC IND RC Board** and **SPEARKE** off.
2. Remove 2 screw and take **BUTTON UNITED** off.
3. Remove 4 screws and take **HOLDER CHASIS** off.



Mechanical Disassembly

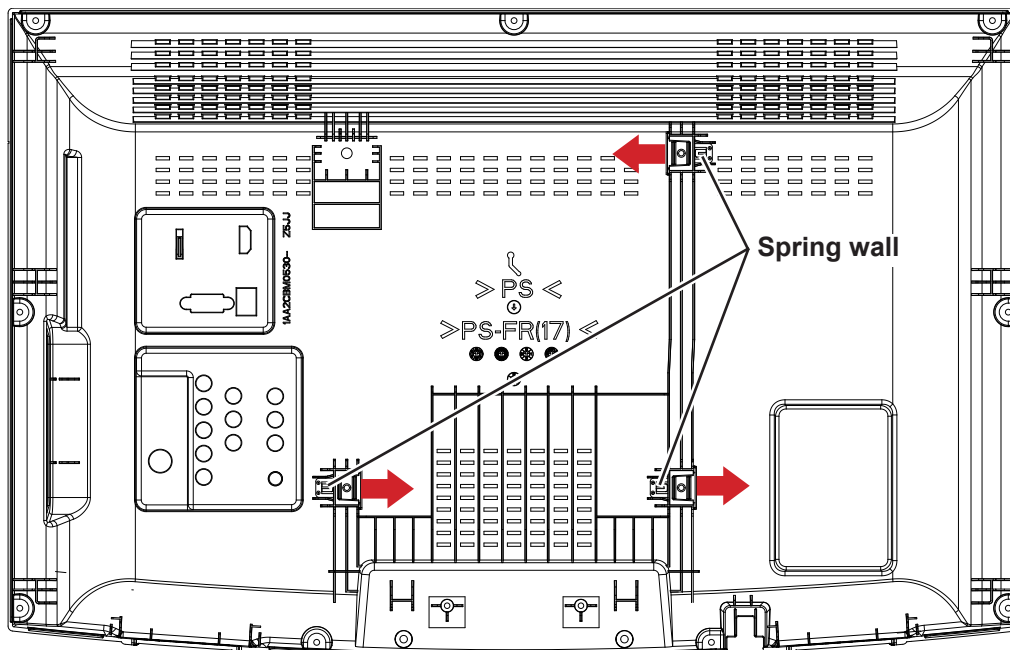
5. SPECIAL POWER HOLDER SCREW and PANEL Removal

1. Take off the 4 **SPECIAL POWER HOLDER SCREWS**.
2. Take the **PANEL** off.



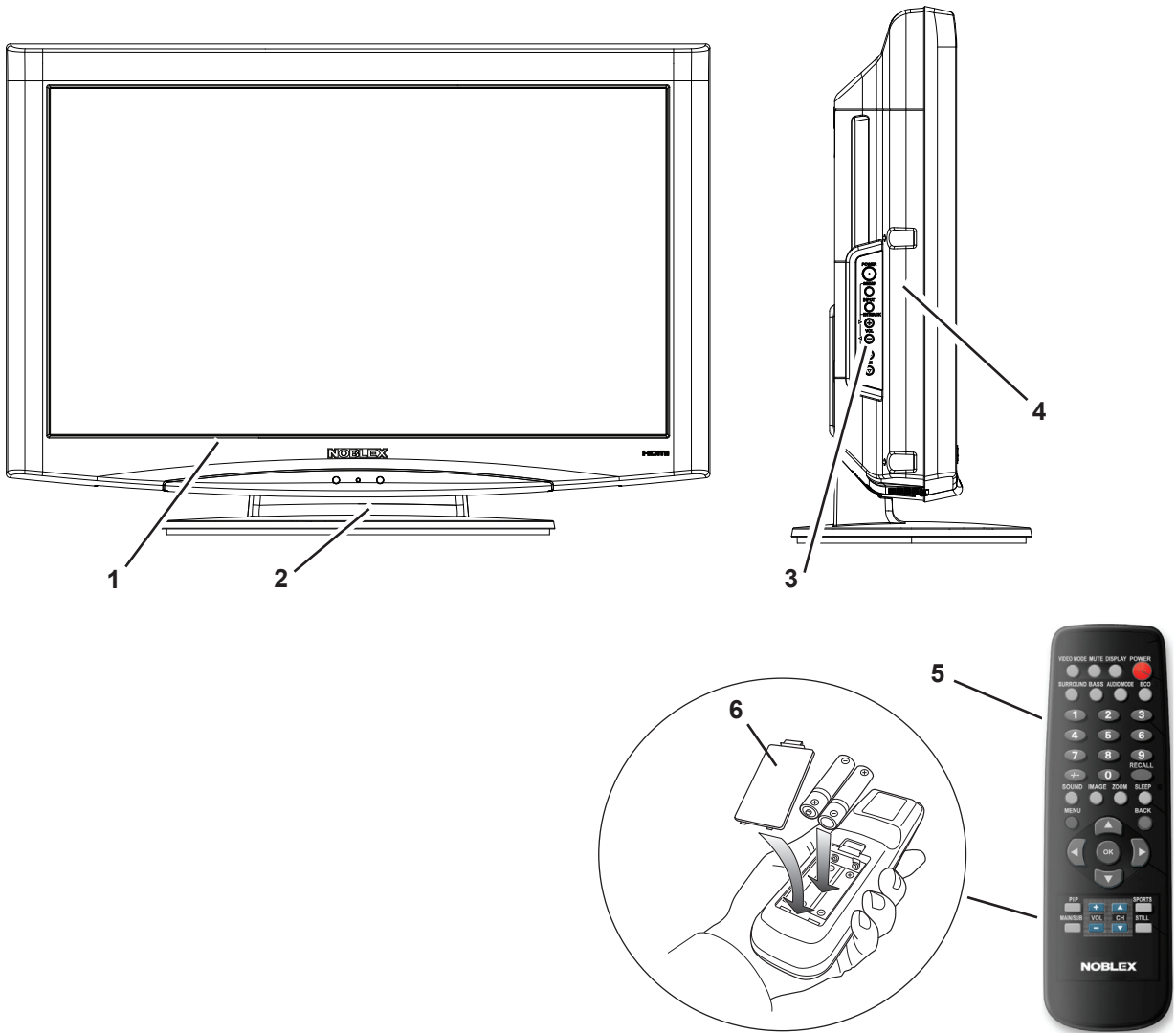
6. MOUNTING HANGER Removal

1. Press down the **spring wall** and drag out the **MOUNTING HANGER** at the same time.



Cabinet Parts List

Note: Parts order must contain Service Ref. No., Part No., and descriptions.



Note: The parts which are not described the part number in this parts list are not supplied for the service parts.

Key No.	Part No.	Description	Key No.	Part No.	Description
1	1AA2CAM0744-E	CABINET FRNT-Z5JY			
2	1AA0SDM0079-C	ASSY,STAND BASE-N8WY			
3	1AA2BUM0615-A	BUTTON UNITED-Z5JW			
4	1AA2CBM0530A-	CABINET BACK-Z5JW			
5	1AV0U10B48101	ASSY,REMOCON JXMTT			
6	1AA2RCM0317--	RC-BATTERY LID-JXMTS			
	1LG6P1P0849--	INSTRUCTION MANUAL-Z5JY			

Chassis Electrical Parts List

Note: Parts order must contain Service Ref. No., Part No., and descriptions.

Key No.	Part No.	Description	Key No.	Part No.	Description	
ASSEMBLED BOARDS			Q020	305 134 5928	TR 2SA1037AK-T146-R	
A1001	655 004 4679	ASSY,PWB,MAIN Z5JW		305 147 2218	TR 2SA1037AK-S-T146	
A1900		ASSY,PWB,RC+LED Z5JW		305 173 9618	TR 2SA1235A1E	
A2000	655 004 4693	ASSY,PWB,POWER Z5JW		305 173 9717	TR 2SA1235A1F	
OUT OF CIRCUIT BOARD				405 220 3115	TR ISA1235AC1E	
	952 001 6348	SOCKET,HOUSING 4P		405 220 3016	TR ISA1235AC1F	
03	952 001 6164	TERMINAL,SOCKET	Q030	406 021 4308	TR MMBTSA1235F	
EL901	645 104 2576	LCD(T240XW01 V1,Z41)		305 014 4512	TR 2SC2412K T146 R	
SP901	652 003 2200	SPEAKER,4		305 014 4611	TR 2SC2412K T146 S	
SP902	652 003 2200	SPEAKER,4		305 015 8727	TR 2SC2812-L6-TB	
W7200	645 104 2583	FLEXIBLE FLAT CABLE		305 015 8925	TR 2SC2812-L7-TB	
W901	652 003 4266	CORD,POWER-2415MK		305 163 1615	TR 2SC2812N-L6-TB0	
WSP	652 003 4280	NONSTANDARD WIRE ASSY		305 173 9816	TR 2SC3928A1R	
TRANSISTOR				305 173 9915	TR 2SC3928A1S	
Q001	305 014 4512	TR 2SC2412K T146 R	Q1002	406 021 4407	TR MMBTSC3928R	
	305 014 4611	TR 2SC2412K T146 S		305 014 4512	TR 2SC2412K T146 R	
	305 015 8727	TR 2SC2812-L6-TB		305 014 4611	TR 2SC2412K T146 S	
	305 015 8925	TR 2SC2812-L7-TB		305 015 8727	TR 2SC2812-L6-TB	
	305 163 1615	TR 2SC2812N-L6-TB0		305 015 8925	TR 2SC2812-L7-TB	
Q003	305 173 9816	TR 2SC3928A1R		305 015 8925	TR 2SC2812-L7-TB	
	305 173 9915	TR 2SC3928A1S	Q1003	305 163 1615	TR 2SC2812N-L6-TB0	
	406 021 4407	TR MMBTSC3928R		305 173 9816	TR 2SC3928A1R	
	305 014 4512	TR 2SC2412K T146 R		305 173 9915	TR 2SC3928A1S	
	305 014 4611	TR 2SC2412K T146 S		406 021 4407	TR MMBTSC3928R	
Q007	305 015 8727	TR 2SC2812-L6-TB	Q1004	305 014 4512	TR 2SC2412K T146 R	
	305 015 8925	TR 2SC2812-L7-TB		305 014 4611	TR 2SC2412K T146 S	
	305 163 1615	TR 2SC2812N-L6-TB0		305 015 8727	TR 2SC2812-L6-TB	
	305 173 9816	TR 2SC3928A1R		305 015 8925	TR 2SC2812-L7-TB	
	305 173 9915	TR 2SC3928A1S		305 163 1615	TR 2SC2812N-L6-TB0	
Q016	406 021 4407	TR MMBTSC3928R		305 173 9816	TR 2SC3928A1R	
	305 165 6311	TR MCH6306-TL	Q1005	305 173 9915	TR 2SC3928A1S	
	305 014 4512	TR 2SC2412K T146 R		406 021 4407	TR MMBTSC3928R	
	305 014 4611	TR 2SC2412K T146 S		305 134 5928	TR 2SA1037AK-T146-R	
	305 015 8727	TR 2SC2812-L6-TB		305 147 2218	TR 2SA1037AK-S-T146	
Q018	305 015 8925	TR 2SC2812-L7-TB		305 173 9618	TR 2SA1235A1E	
	305 163 1615	TR 2SC2812N-L6-TB0		305 173 9717	TR 2SA1235A1F	
	305 173 9816	TR 2SC3928A1R		405 220 3115	TR ISA1235AC1E	
	305 173 9915	TR 2SC3928A1S		405 220 3016	TR ISA1235AC1F	
	406 021 4407	TR MMBTSC3928R	Q101	406 021 4308	TR MMBTSA1235F	
Q019	305 014 4512	TR 2SC2412K T146 R		Q701	305 015 9724	TR 2SC2814-F4-TB
	305 014 4611	TR 2SC2412K T146 S			305 014 4512	TR 2SC2412K T146 R
	305 015 8727	TR 2SC2812-L6-TB	305 014 4611		TR 2SC2412K T146 S	
	305 015 8925	TR 2SC2812-L7-TB	305 015 8727		TR 2SC2812-L6-TB	
	305 163 1615	TR 2SC2812N-L6-TB0	305 015 8925		TR 2SC2812-L7-TB	
	305 173 9816		305 163 1615		TR 2SC2812N-L6-TB0	
	305 173 9915		305 173 9816		TR 2SC3928A1R	
	406 021 4407		305 173 9915		TR 2SC3928A1S	
			406 021 4407		TR MMBTSC3928R	

Chassis Electrical Parts List

Key No.	Part No.	Description	Key No.	Part No.	Description
Q7200	305 134 5928	TR 2SA1037AK-T146-R		305 014 4611	TR 2SC2412K T146 S
	305 147 2218	TR 2SA1037AK-S-T146		305 015 8727	TR 2SC2812-L6-TB
	305 173 9618	TR 2SA1235A1E		305 015 8925	TR 2SC2812-L7-TB
	305 173 9717	TR 2SA1235A1F		305 163 1615	TR 2SC2812N-L6-TB0
	405 220 3115	TR ISA1235AC1E		305 173 9816	TR 2SC3928A1R
	405 220 3016	TR ISA1235AC1F		305 173 9915	TR 2SC3928A1S
	406 021 4308	TR MMBTSA1235F		406 021 4407	TR MMBTSC3928R
Q7201	305 014 4512	TR 2SC2412K T146 R	Q7502	305 165 6311	TR MCH6306-TL
	305 014 4611	TR 2SC2412K T146 S	Q8019	305 014 4512	TR 2SC2412K T146 R
	305 015 8727	TR 2SC2812-L6-TB		305 014 4611	TR 2SC2412K T146 S
	305 015 8925	TR 2SC2812-L7-TB		305 015 8727	TR 2SC2812-L6-TB
	305 163 1615	TR 2SC2812N-L6-TB0		305 015 8925	TR 2SC2812-L7-TB
	305 173 9816	TR 2SC3928A1R		305 163 1615	TR 2SC2812N-L6-TB0
	305 173 9915	TR 2SC3928A1S		305 173 9816	TR 2SC3928A1R
	406 021 4407	TR MMBTSC3928R		305 173 9915	TR 2SC3928A1S
Q7203	305 014 4512	TR 2SC2412K T146 R		406 021 4407	TR MMBTSC3928R
	305 014 4611	TR 2SC2412K T146 S	Q8020	305 014 4512	TR 2SC2412K T146 R
	305 015 8727	TR 2SC2812-L6-TB		305 014 4611	TR 2SC2412K T146 S
	305 015 8925	TR 2SC2812-L7-TB		305 015 8727	TR 2SC2812-L6-TB
	305 163 1615	TR 2SC2812N-L6-TB0		305 015 8925	TR 2SC2812-L7-TB
	305 173 9816	TR 2SC3928A1R		305 163 1615	TR 2SC2812N-L6-TB0
	305 173 9915	TR 2SC3928A1S		305 173 9816	TR 2SC3928A1R
	406 021 4407	TR MMBTSC3928R		305 173 9915	TR 2SC3928A1S
Q7301	305 014 4512	TR 2SC2412K T146 R		406 021 4407	TR MMBTSC3928R
	305 014 4611	TR 2SC2412K T146 S	Q8021	305 014 4512	TR 2SC2412K T146 R
	305 015 8727	TR 2SC2812-L6-TB		305 014 4611	TR 2SC2412K T146 S
	305 015 8925	TR 2SC2812-L7-TB		305 015 8727	TR 2SC2812-L6-TB
	305 163 1615	TR 2SC2812N-L6-TB0		305 015 8925	TR 2SC2812-L7-TB
	305 173 9816	TR 2SC3928A1R		305 163 1615	TR 2SC2812N-L6-TB0
	305 173 9915	TR 2SC3928A1S		305 173 9816	TR 2SC3928A1R
	406 021 4407	TR MMBTSC3928R		305 173 9915	TR 2SC3928A1S
Q7305	305 014 4512	TR 2SC2412K T146 R		406 021 4407	TR MMBTSC3928R
	305 014 4611	TR 2SC2412K T146 S	INTEGRATED CIRCUIT		
	305 015 8727	TR 2SC2812-L6-TB	IC001	409 706 1916	IC TPA1517DWPR
	305 015 8925	TR 2SC2812-L7-TB	IC403	309 437 4715	IC L88M05TL-TL
	305 163 1615	TR 2SC2812N-L6-TB0	IC701	409 692 5714	IC RCLAMP0524P
	305 173 9816	TR 2SC3928A1R	IC702	409 692 5714	IC RCLAMP0524P
	305 173 9915	TR 2SC3928A1S	IC7200	409 704 1413	IC MST740KU-LF
	406 021 4407	TR MMBTSC3928R	IC7501	309 559 9018	IC AMS1117-3.3
Q7306	305 134 5928	TR 2SA1037AK-T146-R		409 683 6515	IC LM1117S-3.3
	305 147 2218	TR 2SA1037AK-S-T146	IC7502	409 698 3318	IC LM1085R-3.3
	305 173 9618	TR 2SA1235A1E		310 586 0104	IC AMS1085CM-3.3
	305 173 9717	TR 2SA1235A1F	IC7504	309 655 1411	IC AMS1117
	405 220 3115	TR ISA1235AC1E		409 688 9313	IC LM1117S-ADJ
	405 220 3016	TR ISA1235AC1F	IC8000	410 728 2109	IC EN25F80-100HCP-Z5JW
	406 021 4308	TR MMBTSA1235F	IC8001	410 648 9905	IC 24LC64T-I/SNG-N5CV
Q7330	305 211 0010	TR 2SC5730-Q	CAPACITOR		
Q7401	305 014 4512	TR 2SC2412K T146 R	C001	303 358 8319	CERAMIC 1U K 10V
	305 014 4611	TR 2SC2412K T146 S		303 364 5814	CERAMIC 1U K 10V
	305 015 8727	TR 2SC2812-L6-TB		304 106 7803	CERAMIC 1U K 10V
	305 015 8925	TR 2SC2812-L7-TB	C002	303 358 8319	CERAMIC 1U K 10V
	305 163 1615	TR 2SC2812N-L6-TB0		303 364 5814	CERAMIC 1U K 10V
	305 173 9816	TR 2SC3928A1R		304 106 7803	CERAMIC 1U K 10V
	305 173 9915	TR 2SC3928A1S	C003	304 106 4000	ELECT 1000U M 16V
	406 021 4407	TR MMBTSC3928R	C004	303 367 0410	CERAMIC 0.1U K 50V
Q7403	305 165 6311	TR MCH6306-TL		303 370 1510	CERAMIC 0.1U K 50V
Q7501	305 014 4512	TR 2SC2412K T146 R		304 104 4903	CERAMIC 0.1U K 50V

Chassis Electrical Parts List

Key No.	Part No.	Description	Key No.	Part No.	Description
C005	304 091 2609	CERAMIC 0.1U K 50V	C1053	303 256 5014	CERAMIC 560P J 50V
	303 384 1414	ELECT 47U M 16V		304 103 7103	CERAMIC 560P J 50V
	303 312 8416	ELECT 47U M 16V		404 116 8507	CERAMIC 560P J 50V
C006	304 106 4000	ELECT 1000U M 16V	C1055	303 256 5014	CERAMIC 560P J 50V
C007	304 106 4000	ELECT 1000U M 16V		304 103 7103	CERAMIC 560P J 50V
C008	303 113 3818	CERAMIC 1000P K 50V		404 116 8507	CERAMIC 560P J 50V
	304 103 2405	CERAMIC 1000P K 50V	C106	304 097 1705	ELECT 100U M 16V
	304 090 1108	CERAMIC 1000P K 50V		303 367 0410	CERAMIC 0.1U K 50V
C009	303 113 3818	CERAMIC 1000P K 50V		303 370 1510	CERAMIC 0.1U K 50V
	304 103 2405	CERAMIC 1000P K 50V	C107	304 104 4903	CERAMIC 0.1U K 50V
	304 090 1108	CERAMIC 1000P K 50V		304 091 2609	CERAMIC 0.1U K 50V
C016	303 207 0310	CERAMIC 1U Z 16V	C108	304 097 3501	ELECT 47 U M 50V
C017	303 402 8319	ELECT 10U M 50V		303 323 8818	CERAMIC 2.2U Z 16V
	303 238 3826	ELECT 10U M 50V		303 215 2214	CERAMIC 0.01U K 50V
C1004	303 145 9918	CERAMIC 22P J 50V	C110	303 224 6111	CERAMIC 0.01U K 50V
	304 104 7904	CERAMIC 22P J 50V		304 090 1207	CERAMIC 0.01U K 50V
	304 094 7601	CERAMIC 22P J 50V	C111	303 215 2214	CERAMIC 0.01U K 50V
C1005	303 145 9918	CERAMIC 22P J 50V		303 224 6111	CERAMIC 0.01U K 50V
	304 104 7904	CERAMIC 22P J 50V		304 090 1207	CERAMIC 0.01U K 50V
	304 094 7601	CERAMIC 22P J 50V	C115	303 215 2214	CERAMIC 0.01U K 50V
C1013	303 145 9918	CERAMIC 22P J 50V		303 224 6111	CERAMIC 0.01U K 50V
	304 104 7904	CERAMIC 22P J 50V		304 090 1207	CERAMIC 0.01U K 50V
	304 094 7601	CERAMIC 22P J 50V	C1511	303 145 9918	CERAMIC 22P J 50V
C1014	303 145 9918	CERAMIC 22P J 50V		304 104 7904	CERAMIC 22P J 50V
	304 104 7904	CERAMIC 22P J 50V		304 094 7601	CERAMIC 22P J 50V
	304 094 7601	CERAMIC 22P J 50V	C1512	303 145 9918	CERAMIC 22P J 50V
C1019	303 402 8319	ELECT 10U M 50V		304 104 7904	CERAMIC 22P J 50V
	303 238 3826	ELECT 10U M 50V		304 094 7601	CERAMIC 22P J 50V
C102	303 298 9612	CERAMIC 0.1U K 16V	C1513	303 256 5014	CERAMIC 560P J 50V
	304 103 4508	CERAMIC 0.1U K 16V		304 103 7103	CERAMIC 560P J 50V
	304 095 0502	CERAMIC 0.1U K 16V		404 116 8507	CERAMIC 560P J 50V
C1020	303 402 8319	ELECT 10U M 50V	C1514	303 256 5014	CERAMIC 560P J 50V
	303 238 3826	ELECT 10U M 50V		304 103 7103	CERAMIC 560P J 50V
	303 403 0718	ELECT 220U M 16V		404 116 8507	CERAMIC 560P J 50V
C1021	303 373 6314	ELECT 220U M 16V	C400	304 106 4000	ELECT 1000U M 16V
	303 402 8319	ELECT 10U M 50V		303 298 9612	CERAMIC 0.1U K 16V
	303 238 3826	ELECT 10U M 50V		304 103 4508	CERAMIC 0.1U K 16V
C1026	303 298 9612	CERAMIC 0.1U K 16V	C401	304 095 0502	CERAMIC 0.1U K 16V
	304 103 4508	CERAMIC 0.1U K 16V		304 097 1705	ELECT 100U M 16V
	304 095 0502	CERAMIC 0.1U K 16V	C403	303 298 9612	CERAMIC 0.1U K 16V
C1027	301 150 6014	MT-GLAZE 0.000 ZA 1/10W		304 103 4508	CERAMIC 0.1U K 16V
	303 145 9918	CERAMIC 22P J 50V		304 095 0502	CERAMIC 0.1U K 16V
	304 094 7601	CERAMIC 22P J 50V	C409	303 403 0718	ELECT 220U M 16V
C1029	301 150 6014	MT-GLAZE 0.000 ZA 1/10W		303 373 6314	ELECT 220U M 16V
	303 402 8319	ELECT 10U M 50V		303 298 9612	CERAMIC 0.1U K 16V
	303 238 3826	ELECT 10U M 50V	C410	304 103 4508	CERAMIC 0.1U K 16V
C103	303 145 9918	CERAMIC 22P J 50V		304 095 0502	CERAMIC 0.1U K 16V
	304 094 7601	CERAMIC 22P J 50V		303 386 0910	ELECT 100U M 16V
C1030	301 150 6014	MT-GLAZE 0.000 ZA 1/10W	C411	303 312 8515	ELECT 100U M 16V
	303 402 8319	ELECT 10U M 50V		303 298 9612	CERAMIC 0.1U K 16V
	303 238 3826	ELECT 10U M 50V		304 103 4508	CERAMIC 0.1U K 16V
C1031	303 145 9918	CERAMIC 22P J 50V	C412	304 095 0502	CERAMIC 0.1U K 16V
	304 094 7601	CERAMIC 22P J 50V		304 106 4000	ELECT 1000U M 16V
	303 298 9612	CERAMIC 0.1U K 16V	C415	303 298 9612	CERAMIC 0.1U K 16V
C104	304 103 4508	CERAMIC 0.1U K 16V		304 103 4508	CERAMIC 0.1U K 16V
	304 095 0502	CERAMIC 0.1U K 16V		304 095 0502	CERAMIC 0.1U K 16V
	303 256 5014	CERAMIC 560P J 50V	C416	303 298 9612	CERAMIC 0.1U K 16V
C1051	304 103 7103	CERAMIC 560P J 50V		304 103 4508	CERAMIC 0.1U K 16V
	404 116 8507	CERAMIC 560P J 50V		304 095 0502	CERAMIC 0.1U K 16V
	303 256 5014	CERAMIC 560P J 50V	C704	303 298 9612	CERAMIC 0.1U K 16V
C1052	304 103 7103	CERAMIC 560P J 50V			
	404 116 8507	CERAMIC 560P J 50V			

Chassis Electrical Parts List

Key No.	Part No.	Description	Key No.	Part No.	Description
C711	304 103 4508	CERAMIC 0.1U K 16V	C7223	303 323 8818	CERAMIC 2.2U Z 16V
	304 095 0502	CERAMIC 0.1U K 16V	C7224	303 323 8818	CERAMIC 2.2U Z 16V
	403 455 1616	CERAMIC 10U K 16V	C7225	303 323 8818	CERAMIC 2.2U Z 16V
C7200	303 356 5112	CERAMIC 0.047U K 50V	C7226	303 113 3818	CERAMIC 1000P K 50V
C7201	303 323 3615	CERAMIC 0.047U K 50V		304 103 2405	CERAMIC 1000P K 50V
	304 091 4504	CERAMIC 0.047U K 50V		304 090 1108	CERAMIC 1000P K 50V
	303 113 3818	CERAMIC 1000P K 50V	C7227	303 358 8319	CERAMIC 1U K 10V
C7202	304 103 2405	CERAMIC 1000P K 50V		303 364 5814	CERAMIC 1U K 10V
	304 090 1108	CERAMIC 1000P K 50V		304 106 7803	CERAMIC 1U K 10V
	303 356 5112	CERAMIC 0.047U K 50V	C7228	303 356 5112	CERAMIC 0.047U K 50V
C7203	303 323 3615	CERAMIC 0.047U K 50V		303 323 3615	CERAMIC 0.047U K 50V
	304 091 4504	CERAMIC 0.047U K 50V		304 091 4504	CERAMIC 0.047U K 50V
	303 356 5112	CERAMIC 0.047U K 50V	C7229	303 298 9612	CERAMIC 0.1U K 16V
C7204	303 323 3615	CERAMIC 0.047U K 50V		304 103 4508	CERAMIC 0.1U K 16V
	304 091 4504	CERAMIC 0.047U K 50V		304 095 0502	CERAMIC 0.1U K 16V
	303 356 5112	CERAMIC 0.047U K 50V	C7230	303 402 8319	ELECT 10U M 50V
C7205	303 323 3615	CERAMIC 0.047U K 50V		303 238 3826	ELECT 10U M 50V
	304 091 4504	CERAMIC 0.047U K 50V	C7231	303 383 5215	CERAMIC 4.7U K 6.3V
	303 356 5112	CERAMIC 0.047U K 50V		303 393 2112	CERAMIC 4.7U K 6.3V
C7206	303 323 3615	CERAMIC 0.047U K 50V	C7232	303 358 8319	CERAMIC 1U K 10V
	304 091 4504	CERAMIC 0.047U K 50V		303 364 5814	CERAMIC 1U K 10V
	303 356 5112	CERAMIC 0.047U K 50V		304 106 7803	CERAMIC 1U K 10V
C7207	303 323 3615	CERAMIC 0.047U K 50V	C7233	303 356 5112	CERAMIC 0.047U K 50V
	304 091 4504	CERAMIC 0.047U K 50V		303 323 3615	CERAMIC 0.047U K 50V
	303 356 5112	CERAMIC 0.047U K 50V		304 091 4504	CERAMIC 0.047U K 50V
C7208	303 323 3615	CERAMIC 0.047U K 50V	C7234	303 402 8319	ELECT 10U M 50V
	304 091 4504	CERAMIC 0.047U K 50V		303 238 3826	ELECT 10U M 50V
	303 113 3818	CERAMIC 1000P K 50V	C7235	303 298 9612	CERAMIC 0.1U K 16V
C7209	304 103 2405	CERAMIC 1000P K 50V		304 103 4508	CERAMIC 0.1U K 16V
	304 090 1108	CERAMIC 1000P K 50V		304 095 0502	CERAMIC 0.1U K 16V
	303 356 5112	CERAMIC 0.047U K 50V	C7236	304 104 0202	CERAMIC 100P J 50V
C7210	303 323 3615	CERAMIC 0.047U K 50V		304 094 6406	CERAMIC 100P J 50V
	304 091 4504	CERAMIC 0.047U K 50V	C7238	303 215 2214	CERAMIC 0.01U K 50V
	303 356 5112	CERAMIC 0.047U K 50V		303 224 6111	CERAMIC 0.01U K 50V
C7211	303 323 3615	CERAMIC 0.047U K 50V		304 090 1207	CERAMIC 0.01U K 50V
	304 091 4504	CERAMIC 0.047U K 50V	C7239	303 215 2214	CERAMIC 0.01U K 50V
	303 356 5112	CERAMIC 0.047U K 50V		303 224 6111	CERAMIC 0.01U K 50V
C7212	303 323 3615	CERAMIC 0.047U K 50V		304 090 1207	CERAMIC 0.01U K 50V
	304 091 4504	CERAMIC 0.047U K 50V	C7240	303 382 7814	CERAMIC 2.2U K 10V
	303 356 5112	CERAMIC 0.047U K 50V	C7241	303 113 3818	CERAMIC 1000P K 50V
C7213	303 323 3615	CERAMIC 0.047U K 50V		304 103 2405	CERAMIC 1000P K 50V
	304 091 4504	CERAMIC 0.047U K 50V		304 090 1108	CERAMIC 1000P K 50V
	303 356 5112	CERAMIC 0.047U K 50V	C7242	304 096 8507	ELECT 10U M 50V
C7214	303 323 3615	CERAMIC 0.047U K 50V	C7243	303 382 7814	CERAMIC 2.2U K 10V
	304 091 4504	CERAMIC 0.047U K 50V	C7244	303 298 9612	CERAMIC 0.1U K 16V
	303 356 5112	CERAMIC 0.047U K 50V		304 103 4508	CERAMIC 0.1U K 16V
C7215	303 323 3615	CERAMIC 0.047U K 50V		304 095 0502	CERAMIC 0.1U K 16V
	304 091 4504	CERAMIC 0.047U K 50V	C7245	303 298 9612	CERAMIC 0.1U K 16V
	303 145 9918	CERAMIC 22P J 50V		304 103 4508	CERAMIC 0.1U K 16V
C7216	304 104 7904	CERAMIC 22P J 50V		304 095 0502	CERAMIC 0.1U K 16V
	304 094 7601	CERAMIC 22P J 50V	C7246	303 298 9612	CERAMIC 0.1U K 16V
	303 145 9918	CERAMIC 22P J 50V		304 103 4508	CERAMIC 0.1U K 16V
C7220	304 104 7904	CERAMIC 22P J 50V		304 095 0502	CERAMIC 0.1U K 16V
	304 094 7601	CERAMIC 22P J 50V	C7247	303 298 9612	CERAMIC 0.1U K 16V
	303 323 8818	CERAMIC 2.2U Z 16V		304 103 4508	CERAMIC 0.1U K 16V
C7221	303 323 8818	CERAMIC 2.2U Z 16V		304 095 0502	CERAMIC 0.1U K 16V
C7222	303 323 8818	CERAMIC 2.2U Z 16V	C7250	303 113 3818	CERAMIC 1000P K 50V

Chassis Electrical Parts List

Key No.	Part No.	Description	Key No.	Part No.	Description
C7251	304 103 2405	CERAMIC 1000P K 50V	C7310	304 104 7904	CERAMIC 22P J 50V
	304 090 1108	CERAMIC 1000P K 50V		304 094 7601	CERAMIC 22P J 50V
	303 113 3818	CERAMIC 1000P K 50V		303 113 4112	CERAMIC 2200P K 50V
	304 103 2405	CERAMIC 1000P K 50V		304 104 5702	CERAMIC 2200P K 50V
C7252	304 090 1108	CERAMIC 1000P K 50V	C7330	304 091 3309	CERAMIC 2200P K 50V
	303 298 9612	CERAMIC 0.1U K 16V		303 402 8418	ELECT 2.2U M 50V
	304 103 4508	CERAMIC 0.1U K 16V		303 238 3529	ELECT 2.2U M 50V
C7253	304 095 0502	CERAMIC 0.1U K 16V	C7331	303 367 0410	CERAMIC 0.1U K 50V
	303 298 9612	CERAMIC 0.1U K 16V		303 370 1510	CERAMIC 0.1U K 50V
	304 103 4508	CERAMIC 0.1U K 16V		304 104 4903	CERAMIC 0.1U K 50V
	304 095 0502	CERAMIC 0.1U K 16V		304 091 2609	CERAMIC 0.1U K 50V
C7254	303 382 7814	CERAMIC 2.2U K 10V	C7400	303 386 0910	ELECT 100U M 16V
C7256	303 113 3818	CERAMIC 1000P K 50V	C7401	303 312 8515	ELECT 100U M 16V
	304 103 2405	CERAMIC 1000P K 50V		303 298 9612	CERAMIC 0.1U K 16V
C7257	304 090 1108	CERAMIC 1000P K 50V	C7500	304 103 4508	CERAMIC 0.1U K 16V
	303 298 9612	CERAMIC 0.1U K 16V		304 095 0502	CERAMIC 0.1U K 16V
	304 103 4508	CERAMIC 0.1U K 16V		303 386 0910	ELECT 100U M 16V
	304 095 0502	CERAMIC 0.1U K 16V		303 312 8515	ELECT 100U M 16V
C7258	304 104 0202	CERAMIC 100P J 50V	C7501	303 298 9612	CERAMIC 0.1U K 16V
	304 094 6406	CERAMIC 100P J 50V		304 103 4508	CERAMIC 0.1U K 16V
	304 104 0202	CERAMIC 100P J 50V		304 095 0502	CERAMIC 0.1U K 16V
C7260	304 094 6406	CERAMIC 100P J 50V	C7502	303 298 9612	CERAMIC 0.1U K 16V
	304 094 6406	CERAMIC 100P J 50V		304 103 4508	CERAMIC 0.1U K 16V
C7261	303 298 9612	CERAMIC 0.1U K 16V	C7503	304 095 0502	CERAMIC 0.1U K 16V
	304 103 4508	CERAMIC 0.1U K 16V		303 386 0910	ELECT 100U M 16V
	304 095 0502	CERAMIC 0.1U K 16V		303 312 8515	ELECT 100U M 16V
	303 382 7814	CERAMIC 2.2U K 10V		303 386 0910	ELECT 100U M 16V
C7262	303 298 9612	CERAMIC 0.1U K 16V	C7504	303 312 8515	ELECT 100U M 16V
C7265	304 103 4508	CERAMIC 0.1U K 16V		303 312 8515	ELECT 100U M 16V
	304 095 0502	CERAMIC 0.1U K 16V	C7505	303 298 9612	CERAMIC 0.1U K 16V
C7266	303 298 9612	CERAMIC 0.1U K 16V		304 103 4508	CERAMIC 0.1U K 16V
	304 103 4508	CERAMIC 0.1U K 16V		304 095 0502	CERAMIC 0.1U K 16V
	304 095 0502	CERAMIC 0.1U K 16V		303 386 0910	ELECT 100U M 16V
C7267	303 298 9612	CERAMIC 0.1U K 16V		303 312 8515	ELECT 100U M 16V
	304 103 4508	CERAMIC 0.1U K 16V	C7506	303 298 9612	CERAMIC 0.1U K 16V
	304 095 0502	CERAMIC 0.1U K 16V		304 103 4508	CERAMIC 0.1U K 16V
	303 402 8319	ELECT 10U M 50V		304 095 0502	CERAMIC 0.1U K 16V
C7268	303 238 3826	ELECT 10U M 50V		303 386 0910	ELECT 100U M 16V
	303 298 9612	CERAMIC 0.1U K 16V	C7507	303 312 8515	ELECT 100U M 16V
C7269	304 103 4508	CERAMIC 0.1U K 16V		303 298 9612	CERAMIC 0.1U K 16V
	304 095 0502	CERAMIC 0.1U K 16V		304 103 4508	CERAMIC 0.1U K 16V
C7270	303 358 8319	CERAMIC 1U K 10V		304 095 0502	CERAMIC 0.1U K 16V
	303 364 5814	CERAMIC 1U K 10V	C7509	303 386 0910	ELECT 100U M 16V
	304 106 7803	CERAMIC 1U K 10V		303 312 8515	ELECT 100U M 16V
	303 298 9612	CERAMIC 0.1U K 16V		303 358 8319	CERAMIC 1U K 10V
C7271	304 103 4508	CERAMIC 0.1U K 16V		303 364 5814	CERAMIC 1U K 10V
	304 095 0502	CERAMIC 0.1U K 16V		304 106 7803	CERAMIC 1U K 10V
	303 382 7814	CERAMIC 2.2U K 10V	C7515	303 386 0910	ELECT 100U M 16V
	303 298 9612	CERAMIC 0.1U K 16V		303 312 8515	ELECT 100U M 16V
C7280	304 103 4508	CERAMIC 0.1U K 16V		303 298 9612	CERAMIC 0.1U K 16V
	304 095 0502	CERAMIC 0.1U K 16V		304 103 4508	CERAMIC 0.1U K 16V
	303 298 9612	CERAMIC 0.1U K 16V		304 095 0502	CERAMIC 0.1U K 16V
	304 103 4508	CERAMIC 0.1U K 16V	C7517	303 298 9612	CERAMIC 0.1U K 16V
C7283	304 095 0502	CERAMIC 0.1U K 16V		304 103 4508	CERAMIC 0.1U K 16V
	304 103 4508	CERAMIC 0.1U K 16V		304 095 0502	CERAMIC 0.1U K 16V
	304 095 0502	CERAMIC 0.1U K 16V		303 386 0910	ELECT 100U M 16V
	303 113 3818	CERAMIC 1000P K 50V	C7518	303 312 8515	ELECT 100U M 16V
C7284	304 103 2405	CERAMIC 1000P K 50V		303 383 5215	CERAMIC 4.7U K 6.3V
	304 090 1108	CERAMIC 1000P K 50V		303 393 2112	CERAMIC 4.7U K 6.3V
	303 145 9918	CERAMIC 22P J 50V		304 107 2005	ELECT 470U M 16V
C7291			C7800		

Chassis Electrical Parts List

Key No.	Part No.	Description	Key No.	Part No.	Description
C7801	303 298 9612	CERAMIC 0.1U K 16V	R1008	301 256 0411	MT-GLAZE 12K JA 1/10W
	304 103 4508	CERAMIC 0.1U K 16V	R1009	301 150 5918	MT-GLAZE 10K JA 1/10W
	304 095 0502	CERAMIC 0.1U K 16V	R101	301 256 0411	MT-GLAZE 12K JA 1/10W
C8001	303 402 8319	ELECT 10U M 50V	R1017	301 256 0411	MT-GLAZE 12K JA 1/10W
	303 238 3826	ELECT 10U M 50V	R1018	301 150 5918	MT-GLAZE 10K JA 1/10W
C8002	303 298 9612	CERAMIC 0.1U K 16V	R1019	301 150 5918	MT-GLAZE 10K JA 1/10W
	304 103 4508	CERAMIC 0.1U K 16V	R1020	301 256 0411	MT-GLAZE 12K JA 1/10W
	304 095 0502	CERAMIC 0.1U K 16V	R1021	301 150 5819	MT-GLAZE 100K JA 1/10W
C8007	303 298 9612	CERAMIC 0.1U K 16V	R1022	301 150 5819	MT-GLAZE 100K JA 1/10W
	304 103 4508	CERAMIC 0.1U K 16V	R1023	301 150 5819	MT-GLAZE 100K JA 1/10W
	304 095 0502	CERAMIC 0.1U K 16V	R1024	301 150 5819	MT-GLAZE 100K JA 1/10W
C8008	403 455 1616	CERAMIC 10U K 16V	R1025	301 150 5819	MT-GLAZE 100K JA 1/10W
C8009	303 402 8319	ELECT 10U M 50V	R1026	301 146 5113	MT-GLAZE 1K JA 1/4W
C8010	303 298 9612	CERAMIC 0.1U K 16V	R1027	301 146 5113	MT-GLAZE 1K JA 1/4W
	304 103 4508	CERAMIC 0.1U K 16V	R1028	301 256 3610	MT-GLAZE 15K JA 1/10W
	304 095 0502	CERAMIC 0.1U K 16V	R1029	301 150 6113	MT-GLAZE 2.2K JA 1/10W
C8011	403 455 1616	CERAMIC 10U K 16V	R103	301 256 5614	MT-GLAZE 47 JA 1/10W
C8013	303 298 9612	CERAMIC 0.1U K 16V	R1030	301 255 6513	MT-GLAZE 100 JA 1/10W
	304 103 4508	CERAMIC 0.1U K 16V	R1031	301 255 6513	MT-GLAZE 100 JA 1/10W
	304 095 0502	CERAMIC 0.1U K 16V	R1032	301 255 6513	MT-GLAZE 100 JA 1/10W
RESISTOR			R1033	301 256 4112	MT-GLAZE 56 JA 1/10W
R001	402 121 8208	OXIDE-MT 2.2JB 2W	R1034	301 255 6513	MT-GLAZE 100 JA 1/10W
R002	402 121 8208	OXIDE-MT 2.2JB 2W	R1035	301 256 2712	MT-GLAZE 75 JA 1/10W
R005	301 150 6212	MT-GLAZE 1K JA 1/10W	R1036	301 150 6113	MT-GLAZE 2.2K JA 1/10W
R006	301 256 6017	MT-GLAZE 27K JA 1/10W	R1037	301 255 9514	MT-GLAZE 220K JA 1/10W
R010	301 256 3818	MT-GLAZE 1.5K JA 1/10W	R1038	301 150 5918	MT-GLAZE 10K JA 1/10W
R011	301 150 5918	MT-GLAZE 10K JA 1/10W	R1039	301 256 2910	MT-GLAZE 150 JA 1/10W
R012	301 150 5918	MT-GLAZE 10K JA 1/10W	R104	301 256 5614	MT-GLAZE 47 JA 1/10W
R013	301 256 3818	MT-GLAZE 1.5K JA 1/10W	R1040	301 150 6212	MT-GLAZE 1K JA 1/10W
R015	301 162 3711	MT-GLAZE 4.7K JA 1/10W	R1041	301 256 5614	MT-GLAZE 47 JA 1/10W
R017	301 150 5918	MT-GLAZE 10K JA 1/10W	R1042	301 150 6113	MT-GLAZE 2.2K JA 1/10W
R019	301 256 7113	MT-GLAZE 680K JA 1/10W	R1043	301 255 9514	MT-GLAZE 220K JA 1/10W
R020	301 150 5918	MT-GLAZE 10K JA 1/10W	R1044	301 150 5918	MT-GLAZE 10K JA 1/10W
R021	301 150 6212	MT-GLAZE 1K JA 1/10W	R1045	301 150 6212	MT-GLAZE 1K JA 1/10W
R022	301 255 6513	MT-GLAZE 100 JA 1/10W	R1046	301 256 5614	MT-GLAZE 47 JA 1/10W
R023	301 255 6513	MT-GLAZE 100 JA 1/10W	R1047	301 256 2910	MT-GLAZE 150 JA 1/10W
R026	301 162 3018	MT-GLAZE 22K JA 1/10W	R1051	301 276 4710	MT-GLAZE 0.000 ZA 1/3W
R027	301 256 5812	MT-GLAZE 270K JA 1/10W	R1052	301 276 4710	MT-GLAZE 0.000 ZA 1/3W
R028	301 256 6017	MT-GLAZE 27K JA 1/10W	R1053	301 276 4710	MT-GLAZE 0.000 ZA 1/3W
R029	301 150 6014	MT-GLAZE 0.000 ZA 1/10W	R1054	301 276 4710	MT-GLAZE 0.000 ZA 1/3W
R031	301 255 6513	MT-GLAZE 100 JA 1/10W	R1063	301 150 6014	MT-GLAZE 0.000 ZA 1/10W
R032	301 150 6212	MT-GLAZE 1K JA 1/10W	R1072	301 256 4112	MT-GLAZE 56 JA 1/10W
R033	301 256 6017	MT-GLAZE 27K JA 1/10W	R1073	301 256 5614	MT-GLAZE 47 JA 1/10W
R034	301 150 5918	MT-GLAZE 10K JA 1/10W	R1078	301 150 6014	MT-GLAZE 0.000 ZA 1/10W
R039	301 188 0510	MT-GLAZE 2.2K JA 1/4W	R1079	301 150 6014	MT-GLAZE 0.000 ZA 1/10W
R053	301 162 3711	MT-GLAZE 4.7K JA 1/10W	R108	301 150 6212	MT-GLAZE 1K JA 1/10W
R056	301 162 3711	MT-GLAZE 4.7K JA 1/10W	R111	301 256 2811	MT-GLAZE 15 JA 1/10W
R057	301 256 0411	MT-GLAZE 12K JA 1/10W	R112	301 162 2417	MT-GLAZE 1.2K JA 1/10W
R058	301 162 2417	MT-GLAZE 1.2K JA 1/10W	R113	301 256 6918	MT-GLAZE 680 JA 1/10W
R059	301 162 2417	MT-GLAZE 1.2K JA 1/10W	R114	301 162 4114	MT-GLAZE 5.6K JA 1/10W
R062	301 150 6014	MT-GLAZE 0.000 ZA 1/10W	R115	301 256 2910	MT-GLAZE 150 JA 1/10W
R064	301 150 5918	MT-GLAZE 10K JA 1/10W	R116	301 162 3711	MT-GLAZE 4.7K JA 1/10W
R066	301 150 5918	MT-GLAZE 10K JA 1/10W	R118	301 276 4710	MT-GLAZE 0.000 ZA 1/3W
R081	301 276 4710	MT-GLAZE 0.000 ZA 1/3W	R121	301 150 6014	MT-GLAZE 0.000 ZA 1/10W
R082	301 276 4710	MT-GLAZE 0.000 ZA 1/3W	R1506	301 255 6513	MT-GLAZE 100 JA 1/10W
R1006	301 256 0411	MT-GLAZE 12K JA 1/10W	R1507	301 255 6513	MT-GLAZE 100 JA 1/10W
R1007	301 150 5918	MT-GLAZE 10K JA 1/10W	R1508	301 150 6113	MT-GLAZE 2.2K JA 1/10W

Chassis Electrical Parts List

Key No.	Part No.	Description	Key No.	Part No.	Description
R1509	301 150 6113	MT-GLAZE 2.2K JA 1/10W	R7216	301 256 0718	MT-GLAZE 33 JA 1/10W
R1510	301 256 2712	MT-GLAZE 75 JA 1/10W	R7217	301 256 0718	MT-GLAZE 33 JA 1/10W
R1511	301 256 2712	MT-GLAZE 75 JA 1/10W	R7218	301 256 0718	MT-GLAZE 33 JA 1/10W
R1512	301 256 2712	MT-GLAZE 75 JA 1/10W	R7219	301 256 0718	MT-GLAZE 33 JA 1/10W
R1513	301 150 6014	MT-GLAZE 0.000 ZA 1/10W	R722	301 265 2314	MT-GLAZE 5.6 JA 1/10W
R1514	301 150 6014	MT-GLAZE 0.000 ZA 1/10W	R7220	301 256 0718	MT-GLAZE 33 JA 1/10W
R1515	301 150 6014	MT-GLAZE 0.000 ZA 1/10W	R7221	301 256 6512	MT-GLAZE 68 JA 1/10W
R1516	301 255 6513	MT-GLAZE 100 JA 1/10W	R7222	301 255 5912	MT-GLAZE 200 JA 1/10W
R1517	301 255 6513	MT-GLAZE 100 JA 1/10W	R7223	301 255 6018	MT-GLAZE 1M JA 1/10W
R1519	301 256 0411	MT-GLAZE 12K JA 1/10W	R7225	301 150 6014	MT-GLAZE 0.000 ZA 1/10W
R1520	301 256 0411	MT-GLAZE 12K JA 1/10W	R7226	301 150 6014	MT-GLAZE 0.000 ZA 1/10W
R1521	301 150 5918	MT-GLAZE 10K JA 1/10W	R7227	301 150 6014	MT-GLAZE 0.000 ZA 1/10W
R1522	301 150 5918	MT-GLAZE 10K JA 1/10W	R7228	301 150 6014	MT-GLAZE 0.000 ZA 1/10W
R1951	301 255 6810	MT-GLAZE 30K JA 1/10W	R7229	301 255 8715	MT-GLAZE 22 JA 1/10W
R1952	301 256 0114	MT-GLAZE 8.2K JA 1/10W	R723	301 265 2314	MT-GLAZE 5.6 JA 1/10W
R1953	301 256 7618	MT-GLAZE 3.9K JA 1/10W	R7230	301 150 6212	MT-GLAZE 1K JA 1/10W
R1954	301 150 6212	MT-GLAZE 1K JA 1/10W	R7231	301 150 6212	MT-GLAZE 1K JA 1/10W
R1955	301 256 0114	MT-GLAZE 8.2K JA 1/10W	R7232	301 150 6212	MT-GLAZE 1K JA 1/10W
R1956	301 162 3711	MT-GLAZE 4.7K JA 1/10W	R7233	301 150 6212	MT-GLAZE 1K JA 1/10W
R1957	301 150 6014	MT-GLAZE 0.000 ZA 1/10W	R7234	301 150 5918	MT-GLAZE 10K JA 1/10W
R1958	301 150 6014	MT-GLAZE 0.000 ZA 1/10W	R7235	301 150 5918	MT-GLAZE 10K JA 1/10W
R1959	301 276 4710	MT-GLAZE 0.000 ZA 1/3W	R724	301 265 2314	MT-GLAZE 5.6 JA 1/10W
R3008	301 150 6014	MT-GLAZE 0.000 ZA 1/10W	R7240	301 255 8715	MT-GLAZE 22 JA 1/10W
R3009	301 150 6014	MT-GLAZE 0.000 ZA 1/10W	R7241	301 150 5918	MT-GLAZE 10K JA 1/10W
R3050	301 256 5911	MT-GLAZE 2.7K JA 1/10W	R7242	301 255 8715	MT-GLAZE 22 JA 1/10W
R3051	301 256 5911	MT-GLAZE 2.7K JA 1/10W	R7243	301 150 6212	MT-GLAZE 1K JA 1/10W
R401	301 240 7211	MT-GLAZE 33 JA 1/3W	R7245	301 150 5918	MT-GLAZE 10K JA 1/10W
R403	301 188 0510	MT-GLAZE 2.2K JA 1/4W	R7246	301 162 3711	MT-GLAZE 4.7K JA 1/10W
R407	301 162 3711	MT-GLAZE 4.7K JA 1/10W	R725	301 265 2314	MT-GLAZE 5.6 JA 1/10W
R705	301 150 5918	MT-GLAZE 10K JA 1/10W	R7250	301 255 8715	MT-GLAZE 22 JA 1/10W
R709	301 256 0213	MT-GLAZE 120K JA 1/10W	R7256	301 255 8715	MT-GLAZE 22 JA 1/10W
R711	301 162 2219	MT-GLAZE 10 JA 1/10W	R7257	301 255 8715	MT-GLAZE 22 JA 1/10W
R713	301 256 6314	MT-GLAZE 47K JA 1/10W	R7258	301 255 8715	MT-GLAZE 22 JA 1/10W
R714	301 256 6314	MT-GLAZE 47K JA 1/10W	R7259	301 255 8715	MT-GLAZE 22 JA 1/10W
R715	301 162 2219	MT-GLAZE 10 JA 1/10W	R726	301 150 6212	MT-GLAZE 1K JA 1/10W
R716	301 162 2219	MT-GLAZE 10 JA 1/10W	R7260	301 255 8715	MT-GLAZE 22 JA 1/10W
R717	301 162 2219	MT-GLAZE 10 JA 1/10W	R7261	301 255 8715	MT-GLAZE 22 JA 1/10W
R718	301 265 2314	MT-GLAZE 5.6 JA 1/10W	R7263	301 255 8715	MT-GLAZE 22 JA 1/10W
R719	301 265 2314	MT-GLAZE 5.6 JA 1/10W	R7264	301 162 3711	MT-GLAZE 4.7K JA 1/10W
R720	301 265 2314	MT-GLAZE 5.6 JA 1/10W	R7265	301 162 3711	MT-GLAZE 4.7K JA 1/10W
R7200	301 255 8715	MT-GLAZE 22 JA 1/10W	R7266	301 255 8715	MT-GLAZE 22 JA 1/10W
R7201	301 255 8715	MT-GLAZE 22 JA 1/10W	R7267	301 255 8715	MT-GLAZE 22 JA 1/10W
R7202	301 256 2712	MT-GLAZE 75 JA 1/10W	R7268	301 162 3711	MT-GLAZE 4.7K JA 1/10W
R7203	301 256 2712	MT-GLAZE 75 JA 1/10W	R7269	301 162 3711	MT-GLAZE 4.7K JA 1/10W
R7204	301 256 2712	MT-GLAZE 75 JA 1/10W	R7270	301 150 5819	MT-GLAZE 100K JA 1/10W
R7205	301 256 2712	MT-GLAZE 75 JA 1/10W	R7271	301 150 5918	MT-GLAZE 10K JA 1/10W
R7206	301 256 2712	MT-GLAZE 75 JA 1/10W	R7273	301 162 3711	MT-GLAZE 4.7K JA 1/10W
R7207	301 256 0718	MT-GLAZE 33 JA 1/10W	R7274	301 150 5918	MT-GLAZE 10K JA 1/10W
R7208	301 150 6014	MT-GLAZE 0.000 ZA 1/10W	R7275	301 150 6212	MT-GLAZE 1K JA 1/10W
R7209	301 256 0718	MT-GLAZE 33 JA 1/10W	R7276	301 255 8715	MT-GLAZE 22 JA 1/10W
R721	301 265 2314	MT-GLAZE 5.6 JA 1/10W	R7277	301 255 8715	MT-GLAZE 22 JA 1/10W
R7210	301 256 6512	MT-GLAZE 68 JA 1/10W	R7278	301 255 8715	MT-GLAZE 22 JA 1/10W
R7211	301 256 0718	MT-GLAZE 33 JA 1/10W	R7279	301 162 3711	MT-GLAZE 4.7K JA 1/10W
R7212	301 256 0718	MT-GLAZE 33 JA 1/10W	R7280	301 255 6513	MT-GLAZE 100 JA 1/10W
R7213	301 256 6512	MT-GLAZE 68 JA 1/10W	R7281	301 162 3018	MT-GLAZE 22K JA 1/10W
R7214	301 256 0718	MT-GLAZE 33 JA 1/10W	R7282	301 162 3711	MT-GLAZE 4.7K JA 1/10W
R7215	301 150 6014	MT-GLAZE 0.000 ZA 1/10W	R7283	301 150 5819	MT-GLAZE 100K JA 1/10W

Chassis Electrical Parts List

Key No.	Part No.	Description	Key No.	Part No.	Description
R7284	301 150 5918	MT-GLAZE 10K JA 1/10W	R8087	301 150 6212	MT-GLAZE 1K JA 1/10W
R7286	301 150 5918	MT-GLAZE 10K JA 1/10W	R8088	301 150 6014	MT-GLAZE 0.000 ZA 1/10W
R7287	301 255 8715	MT-GLAZE 22 JA 1/10W	R8090	301 150 5918	MT-GLAZE 10K JA 1/10W
R7288	301 255 8715	MT-GLAZE 22 JA 1/10W	R8091	301 162 3711	MT-GLAZE 4.7K JA 1/10W
R7289	301 150 5918	MT-GLAZE 10K JA 1/10W	R8092	301 162 3612	MT-GLAZE 470 JA 1/10W
R7291	301 256 2712	MT-GLAZE 75 JA 1/10W	R8093	301 150 6212	MT-GLAZE 1K JA 1/10W
R7292	301 150 6014	MT-GLAZE 0.000 ZA 1/10W	R8100	301 162 3018	MT-GLAZE 22K JA 1/10W
R7293	301 150 6014	MT-GLAZE 0.000 ZA 1/10W	COIL		
R7294	301 162 3711	MT-GLAZE 4.7K JA 1/10W	L1000	945 036 3895	INDUCTOR,220 OHM
R7298	301 150 6014	MT-GLAZE 0.000 ZA 1/10W		952 001 6980	INDUCTOR , 220 OHM
R7301	301 150 6014	MT-GLAZE 0.000 ZA 1/10W		652 003 2071	INDUCTOR ,220 OHM
R7304	301 150 6014	MT-GLAZE 0.000 ZA 1/10W	L101	945 036 3895	INDUCTOR,220 OHM
R7306	301 150 6014	MT-GLAZE 0.000 ZA 1/10W		952 001 6980	INDUCTOR , 220 OHM
R7309	301 150 6212	MT-GLAZE 1K JA 1/10W		652 003 2071	INDUCTOR ,220 OHM
R7310	301 162 3711	MT-GLAZE 4.7K JA 1/10W	L102	652 003 0718	INDUCTOR ,0.82U, K
R7311	301 255 6513	MT-GLAZE 100 JA 1/10W	L7200	945 004 6651	INDUCTOR,600 OHM
R7314	301 150 5918	MT-GLAZE 10K JA 1/10W	L7330	652 003 2569	INDUCTOR ,220UH
R7320	301 150 5918	MT-GLAZE 10K JA 1/10W	L7500	945 036 3895	INDUCTOR,220 OHM
R7321	301 256 6314	MT-GLAZE 47K JA 1/10W		952 001 6980	INDUCTOR , 220 OHM
R7322	301 162 3711	MT-GLAZE 4.7K JA 1/10W		652 003 2071	INDUCTOR ,220 OHM
R7323	301 150 6113	MT-GLAZE 2.2K JA 1/10W	L7501	945 036 3895	INDUCTOR,220 OHM
R7324	301 256 5911	MT-GLAZE 2.7K JA 1/10W		952 001 6980	INDUCTOR , 220 OHM
R7325	301 256 6314	MT-GLAZE 47K JA 1/10W		652 003 2071	INDUCTOR ,220 OHM
R7326	301 162 3018	MT-GLAZE 22K JA 1/10W	L7502	945 036 3895	INDUCTOR,220 OHM
R7330	301 162 2219	MT-GLAZE 10 JA 1/10W		952 001 6980	INDUCTOR , 220 OHM
R7331	301 162 3711	MT-GLAZE 4.7K JA 1/10W		652 003 2071	INDUCTOR ,220 OHM
R7332	301 150 6212	MT-GLAZE 1K JA 1/10W	L7504	945 036 3895	INDUCTOR,220 OHM
R7333	301 150 5819	MT-GLAZE 100K JA 1/10W		952 001 6980	INDUCTOR , 220 OHM
R7412	301 150 6014	MT-GLAZE 0.000 ZA 1/10W		652 003 2071	INDUCTOR ,220 OHM
R7416	301 150 6014	MT-GLAZE 0.000 ZA 1/10W	L7506	945 036 3895	INDUCTOR,220 OHM
R7420	301 276 4710	MT-GLAZE 0.000 ZA 1/3W		952 001 6980	INDUCTOR , 220 OHM
R7422	301 150 6212	MT-GLAZE 1K JA 1/10W		652 003 2071	INDUCTOR ,220 OHM
R7425	301 256 3610	MT-GLAZE 15K JA 1/10W	L7507	945 036 3895	INDUCTOR,220 OHM
R7426	301 150 5918	MT-GLAZE 10K JA 1/10W		952 001 6980	INDUCTOR , 220 OHM
R7427	301 150 5819	MT-GLAZE 100K JA 1/10W		652 003 2071	INDUCTOR ,220 OHM
R7428	301 150 6014	MT-GLAZE 0.000 ZA 1/10W	L7508	945 036 3895	INDUCTOR,220 OHM
R7502	301 150 5918	MT-GLAZE 10K JA 1/10W		952 001 6980	INDUCTOR , 220 OHM
R7503	301 150 5819	MT-GLAZE 100K JA 1/10W		652 003 2071	INDUCTOR ,220 OHM
R7504	301 256 3610	MT-GLAZE 15K JA 1/10W	L7509	945 036 3895	INDUCTOR,220 OHM
R7505	301 150 5918	MT-GLAZE 10K JA 1/10W		952 001 6980	INDUCTOR , 220 OHM
R7507	301 264 6313	MT-GLAZE 22 FA 1/10W		652 003 2071	INDUCTOR ,220 OHM
R7508	301 150 6212	MT-GLAZE 1K JA 1/10W	L7513	945 036 3895	INDUCTOR,220 OHM
R7742	301 150 5918	MT-GLAZE 10K JA 1/10W		952 001 6980	INDUCTOR , 220 OHM
R7800	301 276 4710	MT-GLAZE 0.000 ZA 1/3W		652 003 2071	INDUCTOR ,220 OHM
R7801	301 276 4710	MT-GLAZE 0.000 ZA 1/3W	L8003	945 036 3895	INDUCTOR,220 OHM
R8000	301 150 5918	MT-GLAZE 10K JA 1/10W		952 001 6980	INDUCTOR , 220 OHM
R8003	301 162 3711	MT-GLAZE 4.7K JA 1/10W		652 003 2071	INDUCTOR ,220 OHM
R8008	301 162 3117	MT-GLAZE 3.3K JA 1/10W	LB7400	645 090 9771	IMPEDANCE,200 OHM M
R8012	301 255 6513	MT-GLAZE 100 JA 1/10W	LB7401	645 090 9771	IMPEDANCE,200 OHM M
R8013	301 255 6513	MT-GLAZE 100 JA 1/10W	LB7402	645 090 9771	IMPEDANCE,200 OHM M
R8016	301 162 3711	MT-GLAZE 4.7K JA 1/10W	DIODE		
R8017	301 162 3711	MT-GLAZE 4.7K JA 1/10W	D001	307 163 0414	DIODE 1SS352-(TPH3)
R8019	301 255 6513	MT-GLAZE 100 JA 1/10W		307 149 0810	DIODE 1SS355-TE-17
R8023	301 150 6014	MT-GLAZE 0.000 ZA 1/10W		408 062 7201	DIODE 1SS355
R8024	301 150 6014	MT-GLAZE 0.000 ZA 1/10W		408 066 0000	DIODE L1SS355T1G
R8085	301 150 6212	MT-GLAZE 1K JA 1/10W	D002	307 206 5512	ZD UDZS-TE-179.1B
R8086	301 162 3612	MT-GLAZE 470 JA 1/10W	D013	307 222 6319	ZD UDZS-TE-173.9B

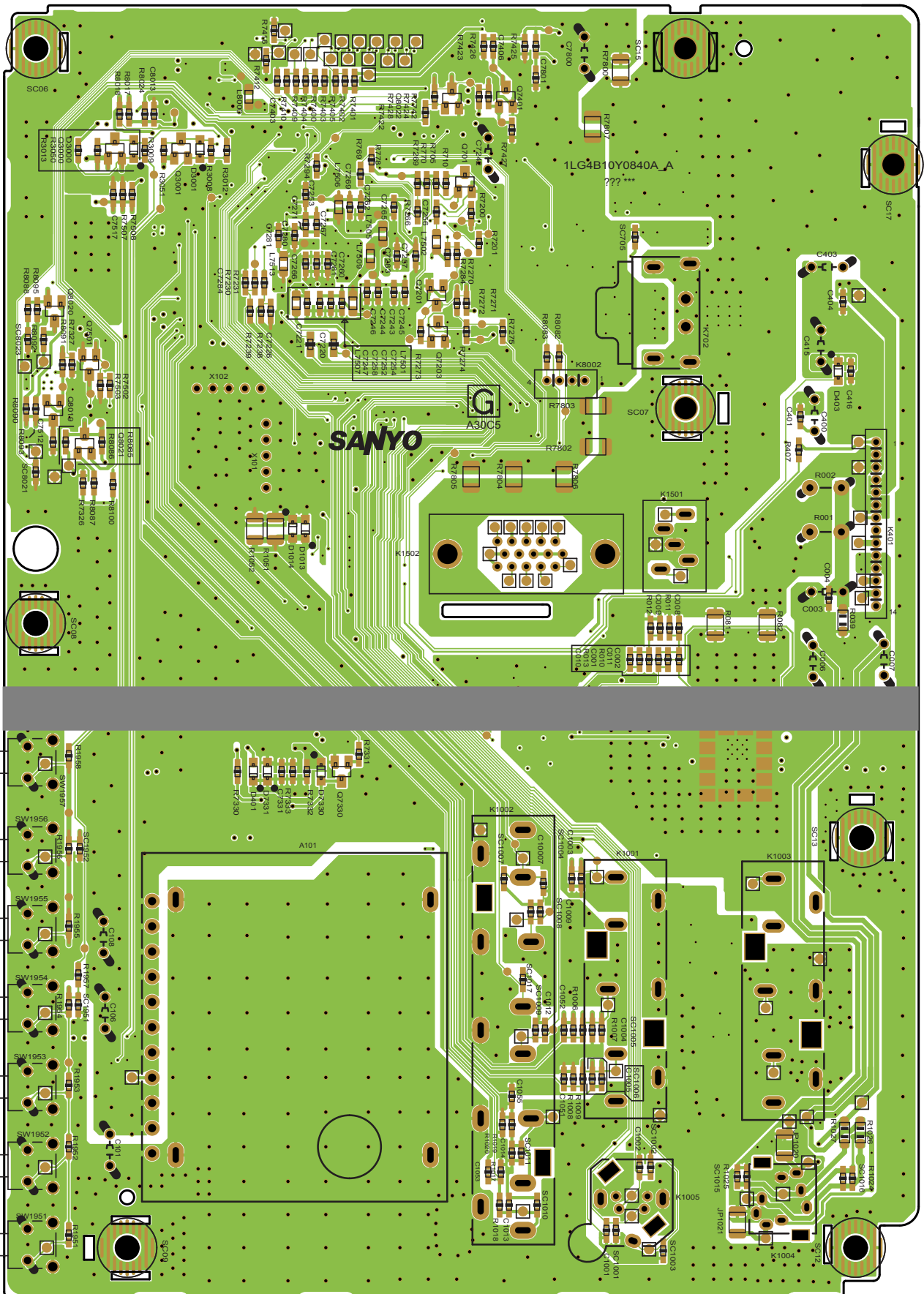
Chassis Electrical Parts List

Key No.	Part No.	Description	Key No.	Part No.	Description
D015	307 163 0414	DIODE 1SS352-(TPH3)	MISCELLANEOUS		
	307 149 0810	DIODE 1SS355-TE-17	A101	652 003 0701	TUNERU/V
	408 062 7201	DIODE 1SS355	K1004	652 003 2620	JACK,PHONE D3.6
	408 066 0000	DIODE L1SS355T1G	K1005	652 003 1432	SOCKET,DIN 4P
D102	307 163 0414	DIODE 1SS352-(TPH3)	K1501	652 002 9958	JACK,PHONE D3.6
	307 149 0810	DIODE 1SS355-TE-17	K1502	652 002 9934	SOCKET,D-SUB 15P
	408 062 7201	DIODE 1SS355	K702	652 003 3825	SOCKET,HDMI 19P
	408 066 0000	DIODE L1SS355T1G	K7200	652 002 6650	SOCKET,FPC 30P
D1501	307 208 9716	ZD UDZS-TE-175.6B	SC1001	945 076 3503	SURGE-ABSORBER
	408 062 9700	ZENER DIODE MM3Z5V6B	SC1002	945 076 3503	SURGE-ABSORBER
D1502	307 208 9716	ZD UDZS-TE-175.6B	SC1003	945 076 3503	SURGE-ABSORBER
	408 062 9700	ZENER DIODE MM3Z5V6B	SC1015	945 076 3503	SURGE-ABSORBER
D1503	307 208 9716	ZD UDZS-TE-175.6B	SC1016	945 076 3503	SURGE-ABSORBER
	408 062 9700	ZENER DIODE MM3Z5V6B	SC1017	945 076 3503	SURGE-ABSORBER
D1504	307 208 9716	ZD UDZS-TE-175.6B	SC1500	945 076 3503	SURGE-ABSORBER
	408 062 9700	ZENER DIODE MM3Z5V6B	SC1501	945 076 3503	SURGE-ABSORBER
D401	307 163 0414	DIODE 1SS352-(TPH3)	SC1502	945 076 3503	SURGE-ABSORBER
	307 149 0810	DIODE 1SS355-TE-17	SC1503	945 076 3503	SURGE-ABSORBER
	408 062 7201	DIODE 1SS355	SC1504	945 076 3503	SURGE-ABSORBER
	408 066 0000	DIODE L1SS355T1G	SC1505	945 076 3503	SURGE-ABSORBER
D402	307 163 0414	DIODE 1SS352-(TPH3)	SC1506	945 076 3503	SURGE-ABSORBER
	307 149 0810	DIODE 1SS355-TE-17	SC1507	945 076 3503	SURGE-ABSORBER
	408 062 7201	DIODE 1SS355	SC1508	945 076 3503	SURGE-ABSORBER
	408 066 0000	DIODE L1SS355T1G	SC1951	945 076 3503	SURGE-ABSORBER
D403	307 163 0414	DIODE 1SS352-(TPH3)	SC1952	945 076 3503	SURGE-ABSORBER
	307 149 0810	DIODE 1SS355-TE-17	SC704	945 076 3503	SURGE-ABSORBER
	408 062 7201	DIODE 1SS355	SC705	945 076 3503	SURGE-ABSORBER
	408 066 0000	DIODE L1SS355T1G	SC706	945 076 3503	SURGE-ABSORBER
D405	307 163 0414	DIODE 1SS352-(TPH3)	SC710	945 076 3503	SURGE-ABSORBER
	307 149 0810	DIODE 1SS355-TE-17	SC7400	945 076 3503	SURGE-ABSORBER
	408 062 7201	DIODE 1SS355	SW1951	945 019 4888	SWITCH,PUSH 1P-1TX1
	408 066 0000	DIODE L1SS355T1G	SW1952	945 019 4888	SWITCH,PUSH 1P-1TX1
D703	307 163 0414	DIODE 1SS352-(TPH3)	SW1953	945 019 4888	SWITCH,PUSH 1P-1TX1
	307 149 0810	DIODE 1SS355-TE-17	SW1954	945 019 4888	SWITCH,PUSH 1P-1TX1
	408 062 7201	DIODE 1SS355	SW1955	945 019 4888	SWITCH,PUSH 1P-1TX1
	408 066 0000	DIODE L1SS355T1G	SW1956	945 019 4888	SWITCH,PUSH 1P-1TX1
D704	307 163 0414	DIODE 1SS352-(TPH3)	SW1957	945 019 4888	SWITCH,PUSH 1P-1TX1
	307 149 0810	DIODE 1SS355-TE-17	X101	422 007 1208	SAW F D3502H
	408 062 7201	DIODE 1SS355	X102	422 007 0805	SAW F M9370
	408 066 0000	DIODE L1SS355T1G	X7200	652 003 2279	OSC,CRYSTAL 14.31818MHZ
D7200	307 163 0414	DIODE 1SS352-(TPH3)	CAPACITOR		
	307 149 0810	DIODE 1SS355-TE-17	C1920	303 368 7319	CERAMIC 10U K 6.3V
	408 062 7201	DIODE 1SS355	C1921	303 368 7319	CERAMIC 10U K 6.3V
	408 066 0000	DIODE L1SS355T1G	C1922	303 113 3818	CERAMIC 1000P K 50V
D7201	307 163 0414	DIODE 1SS352-(TPH3)		303 224 5718	CERAMIC 1000P K 50V
	307 149 0810	DIODE 1SS355-TE-17		304 103 2405	CERAMIC 1000P K 50V
	408 062 7201	DIODE 1SS355		304 090 1108	CERAMIC 1000P K 50V
	408 066 0000	DIODE L1SS355T1G	RESISTOR		
D7330	307 163 0414	DIODE 1SS352-(TPH3)	R1920	301 162 2912	MT-GLAZE 220 JA 1/10W
	307 149 0810	DIODE 1SS355-TE-17	R1921	301 162 2912	MT-GLAZE 220 JA 1/10W
	408 062 7201	DIODE 1SS355	R1922	301 255 6513	MT-GLAZE 100 JA 1/10W
	408 066 0000	DIODE L1SS355T1G	DIODE		
D7331	307 228 4913	ZENER DIODE UDZS33B-TE-17	D1902	307 158 9207	LED SPR-39MVWF
D7501	307 163 0414	DIODE 1SS352-(TPH3)		408 065 4108	LED BL-BEG2T1Q-AB
	307 149 0810	DIODE 1SS355-TE-17	D1902A	655 002 6538	LED SPACER-N3EA
	408 062 7201	DIODE 1SS355	MISCELLANEOUS		
	408 066 0000	DIODE L1SS355T1G	U1901	645 091 7189	UNIT,REMOCON RECEIVER

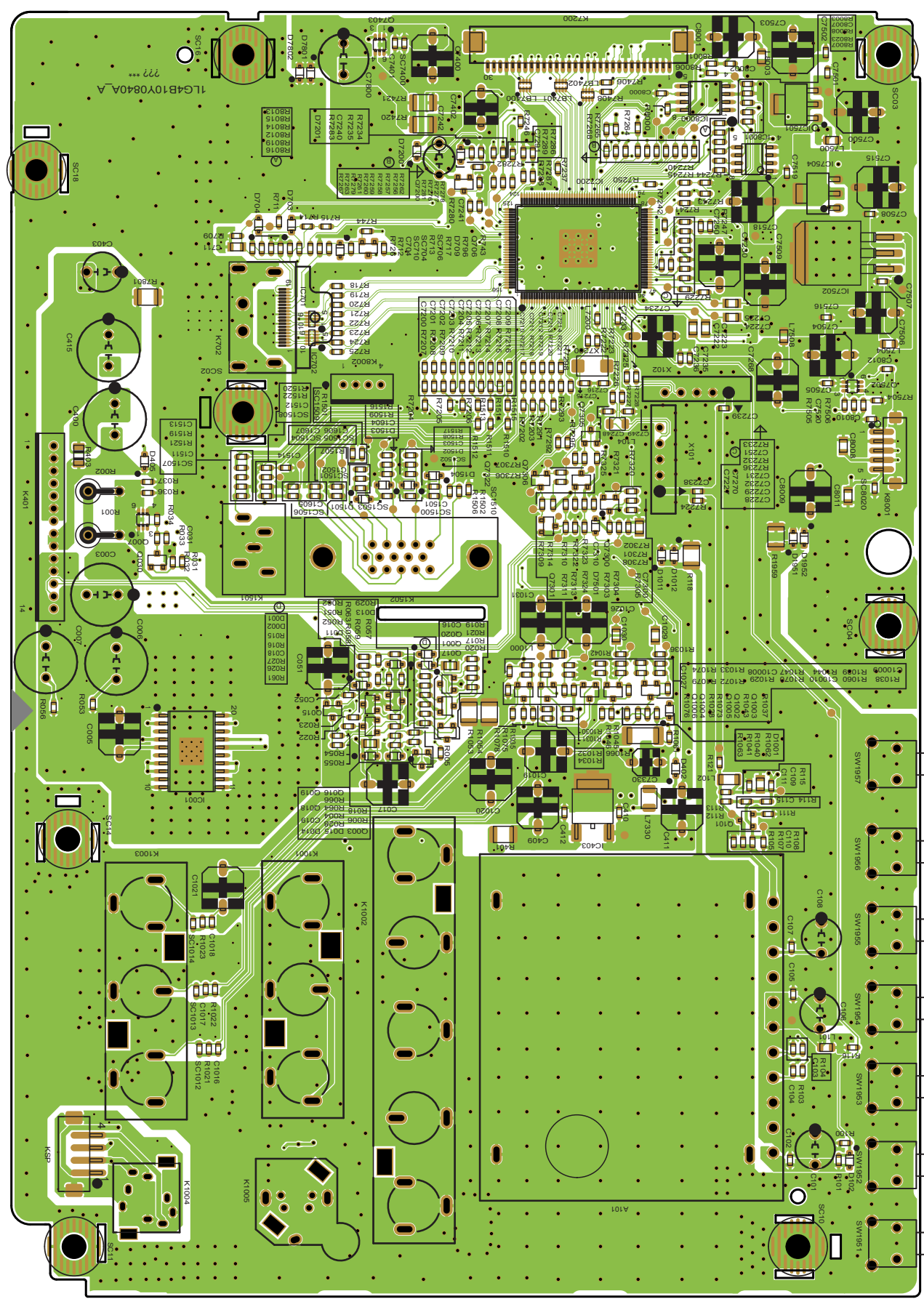
Chassis Electrical Parts List

Key No.	Part No.	Description	Key No.	Part No.	Description
CAPACITOR			BD204H1	655 001 8403	EYELET
CE201H1	655 001 8410	EYELET	BD204H2	655 001 8403	EYELET
CE201H2	655 001 8410	EYELET	CABINET PARTS		
CN1H1	655 001 8403	EYELET		610 352 2845	ASSY,STAND BASE-N8WY
CN1H2	655 001 8403	EYELET	*03*	610 348 9292	RUBBER PAD-N8JE
CX201H1	655 001 8410	EYELET	*03*	610 352 2869	STAND BASE-N8WY
CX201H2	655 001 8410	EYELET		610 354 8210	BADGE NOBLEX-Z5HY
CX202H1	655 001 8410	EYELET		610 355 3757	BUTTON UNITED-Z5JW
CX202H2	655 001 8410	EYELET		610 354 8234	CABINET FRONT-Z5JY
VARIABLE RESISTOR				610 354 5059	CABINET BACK-Z5JW
VZ201H1	655 001 8410	EYELET		610 353 1489	DEC IND RC-Z5JJ
VZ201H2	655 001 8410	EYELET		610 354 5202	DEC CONTROL SHEET-Z5JW
TRANSFORMER				610 353 3810	SPACER SHEET A-Z5ED
T201H1	655 001 8410	EYELET		610 354 8166	SPACER SHEET A-Z5JW
T201H2	655 001 8410	EYELET		610 354 8173	SPACER SHEET B-Z5JW
T301H1	655 001 8410	EYELET		610 354 8180	SPACER SHEET C-Z5JW
T301H2	655 001 8410	EYELET		655 003 7060	SPACER SHEET BACK A-N8WJ
T302H1	655 001 8410	EYELET		655 003 7053	SPACER SHEET BACK B-N8WJ
T302H2	655 001 8410	EYELET		655 003 7046	SPACER SHEET BACK C-N8WJ
TR201H1	655 001 8403	EYELET		655 003 8722	SPACER SHEET D-N8WJ
TR201H2	655 001 8403	EYELET	CHASSIS PARTS		
COIL				610 353 8419	ADHESIVE CLOTH TAPE-Z5EB
LF201H1	655 001 8410	EYELET		610 355 3764	ADHESIVE CLOTH TAPE-Z5HW
LF201H2	655 001 8410	EYELET		610 353 1632	SPACER CUSHION POWER-Z5JJ
LF201H3	655 001 8410	EYELET		412 080 6306	SPECIAL POWER HOLDER SCRE
LF201H4	655 001 8410	EYELET	PACKING MATERIALS DIRECTORY		
LF202H1	655 001 8410	EYELET		610 354 8272	CARTON CASE-Z5JY
LF202H2	655 001 8410	EYELET		610 355 4709	BAG SET-Z5JW
LF202H3	655 001 8410	EYELET		610 355 4716	BAG STAND-Z5JW
LF202H4	655 001 8410	EYELET		610 354 5080	CUSHION TOP-Z5JW
LF203H1	655 001 8410	EYELET		610 354 5165	CUSHION BTM-Z5JW
LF203H2	655 001 8410	EYELET		655 002 4954	BOPP TAPE (BOMEI)
LF203H3	655 001 8410	EYELET	ACCESSORIES		
LF203H4	655 001 8410	EYELET		610 354 9446	POLY BAG B-Z5JW
DIODE				645 098 9223	ASSY,REMOCON JXMTT
D201H1	655 001 8403	EYELET	*03*	610 343 2441	RC-BATTERY LID-JXMTS
D201H2	655 001 8403	EYELET		655 003 5622	POLY BAG-S2EK
D202H1	655 001 8403	EYELET		655 004 3566	INSTRUCTIONS MANUAL-Z5JY
D202H2	655 001 8403	EYELET		411 190 6305	SCR TPG BRZ 4X16
DS301H1	655 001 8403	EYELET	SCREWS-CABINET-Z5JW		
DS302H1	655 001 8403	EYELET		411 220 5506	SCR S-TPG BIN 3X14
DS303H1	655 001 8403	EYELET		411 189 9409	SCR PAN+SW+W 3X8
DS304H1	655 001 8403	EYELET	SCREWS -CHASSIS-Z5JW		
DS306H1	655 001 8403	EYELET		411 189 9409	SCR PAN+SW+W 3X8
MISCELLANEOUS					
F201H1	655 001 8410	EYELET			
F201H2	655 001 8410	EYELET			
Q201H1	655 001 8410	EYELET			
Q201H2	655 001 8410	EYELET			
Q301H1	655 001 8410	EYELET			
Q301H2	655 001 8410	EYELET			
BD201H1	655 001 8403	EYELET			
BD201H2	655 001 8403	EYELET			
BD202H1	655 001 8403	EYELET			
BD202H2	655 001 8403	EYELET			
BD203H1	655 001 8403	EYELET			
BD203H2	655 001 8403	EYELET			

MAIN BOARD (Solder Side)



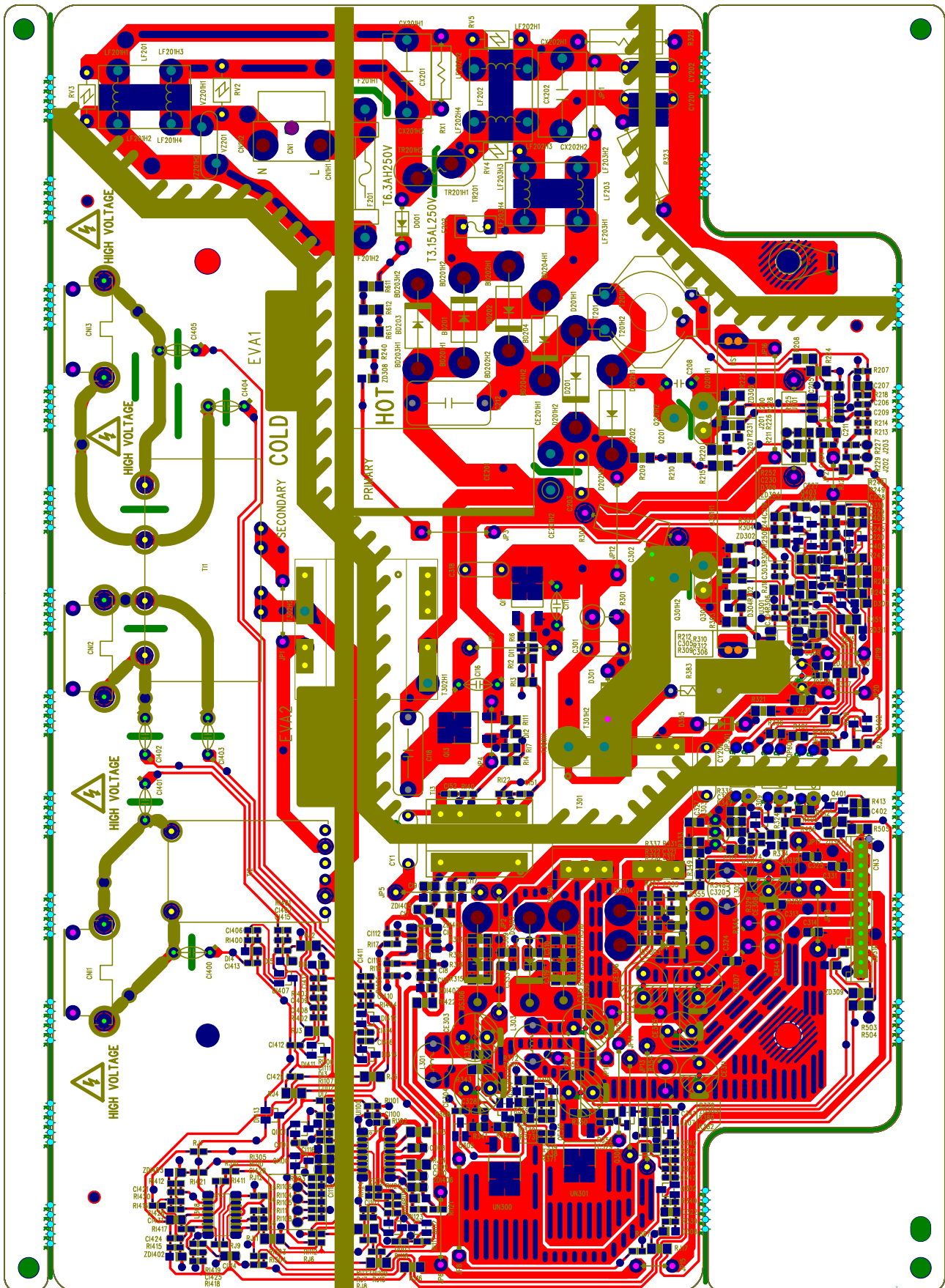
MAIN BOARD (Part Side)



POWER BOARD (Solder Side)

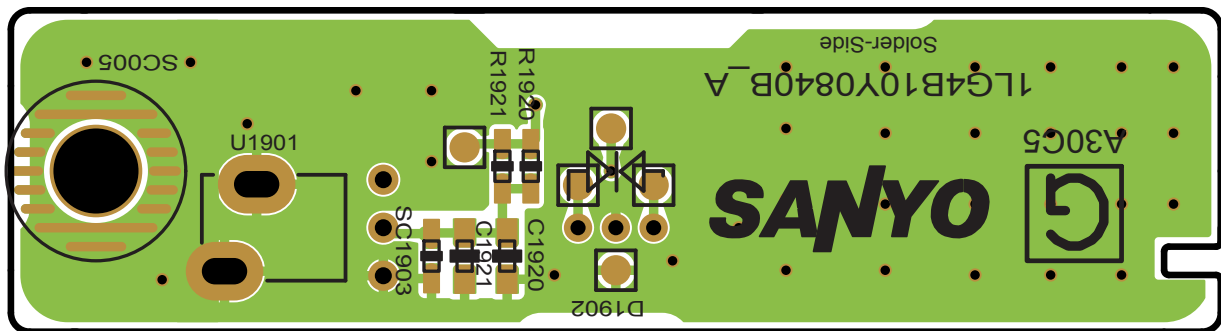


POWER BOARD (Part Side)

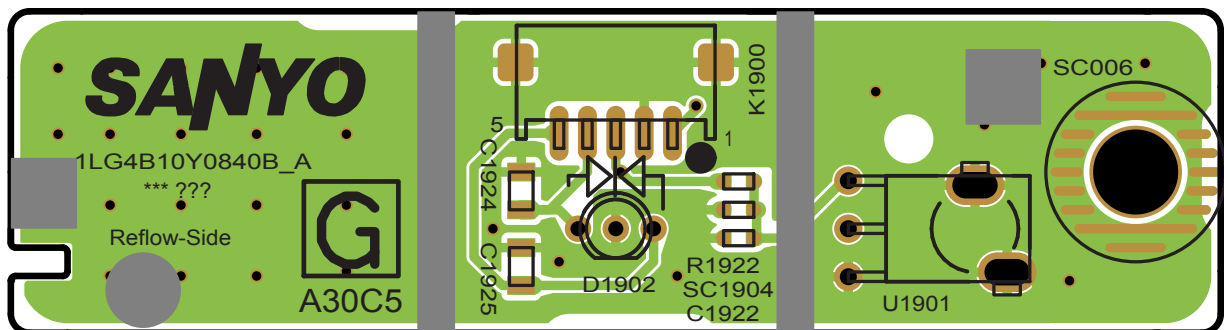


Printed Wiring Board

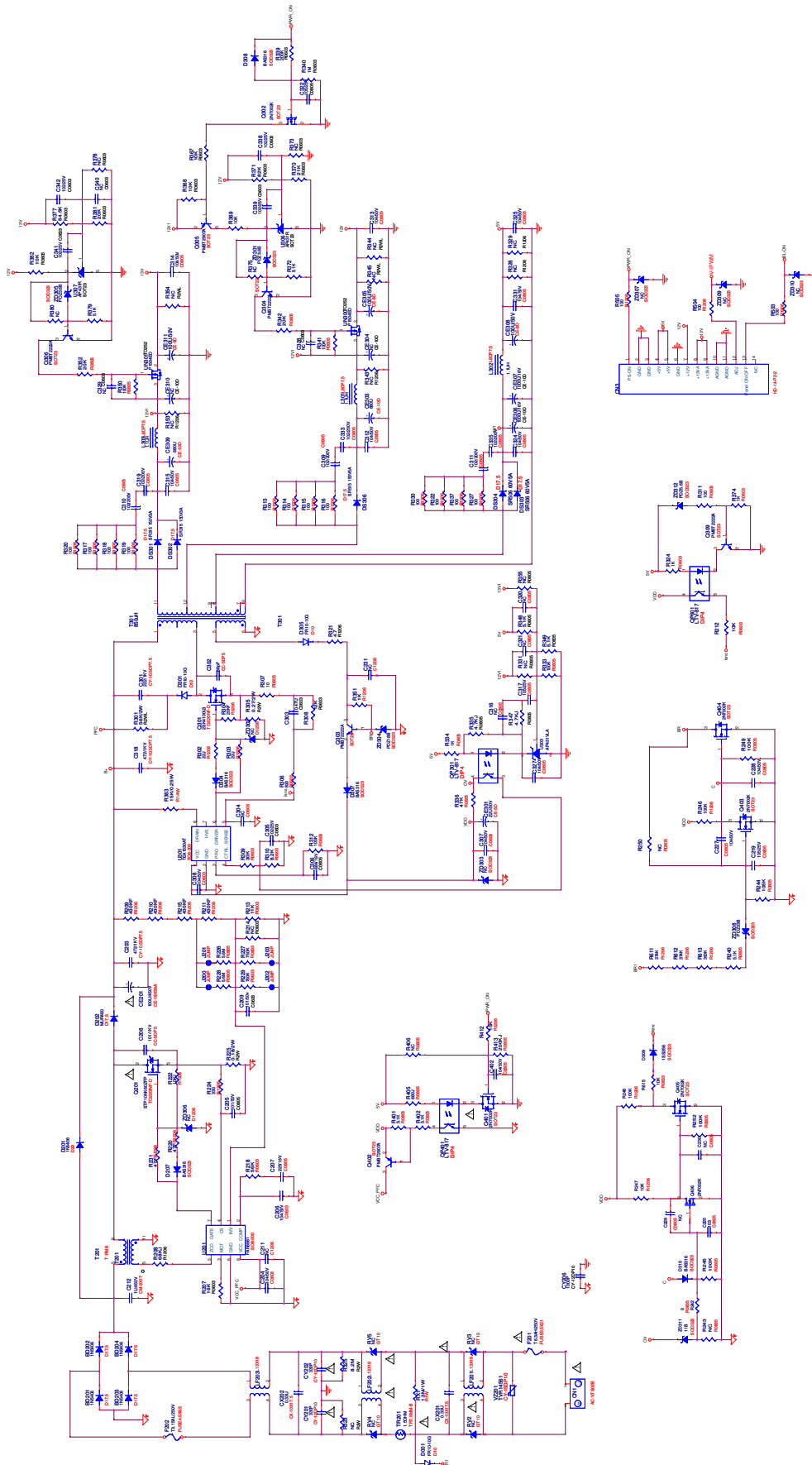
RC+LED BOARD (Solder Side)



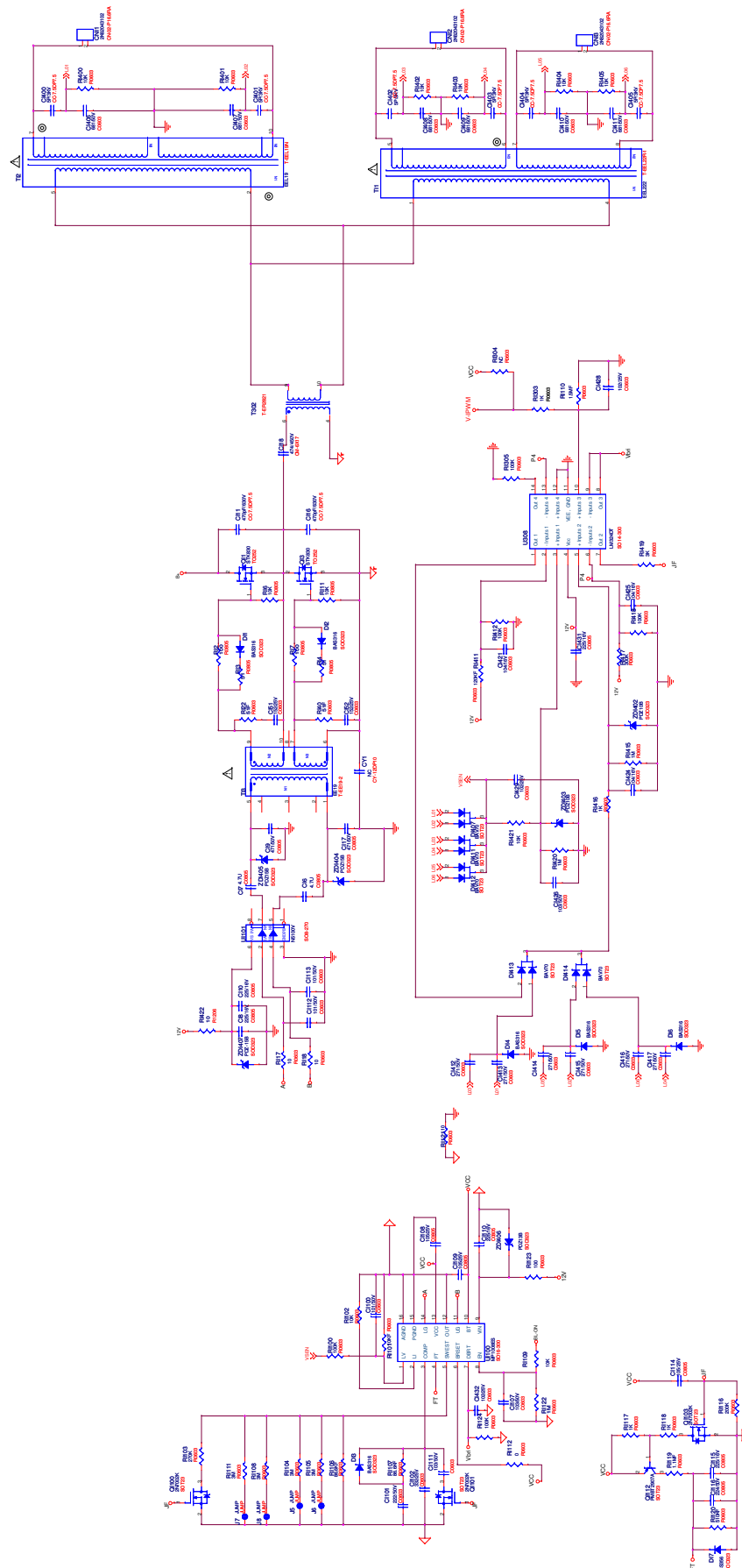
RC+LED BOARD (Part Side)



POWER BOARD (1)

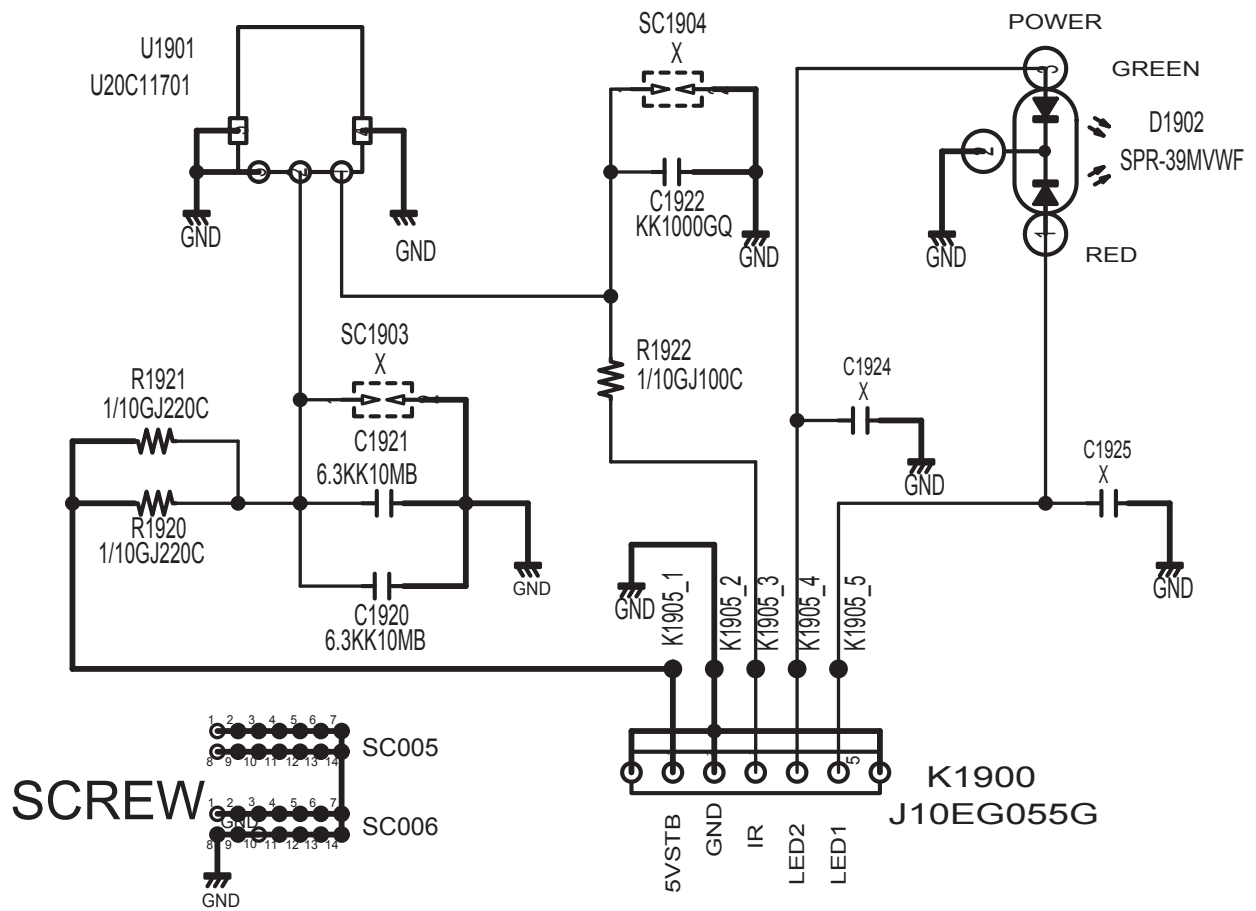


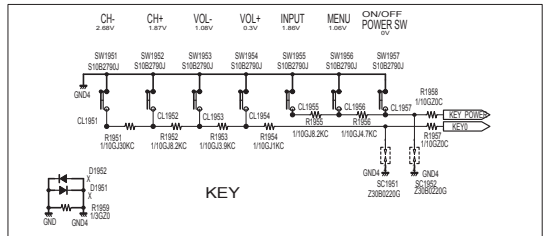
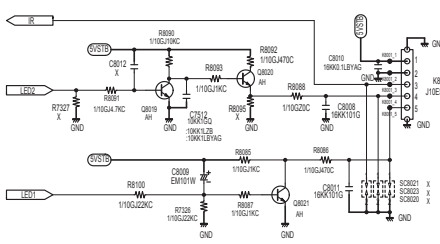
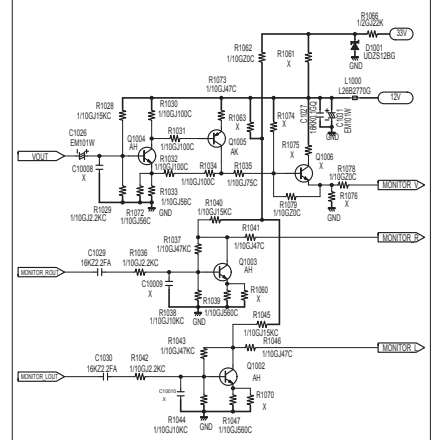
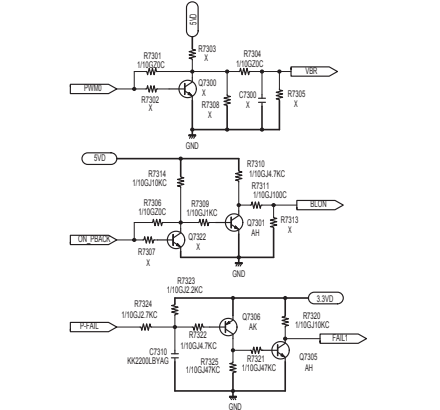
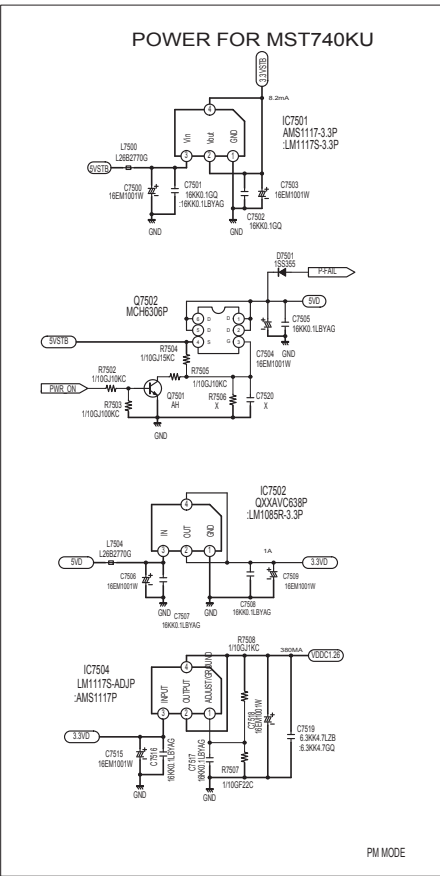
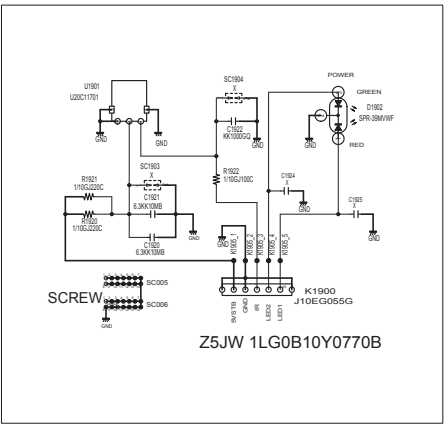
POWER BOARD (2)



Schematic Diagram

RC+LED BOARD





NOBLEX	COLOUR TELEVISION
	UE7-M SERVICE REF. NO. 24LC827H-00

PRODUCT SAFETY NOTICE:

Product safety should be considered when a component replacement is made in any area of a receiver. Components indicated by a mark Δ in this circuit diagram show components whose values have special significance to product safety. It is particularly recommended that only parts specified on the part service manual be used for components replacement pointed out by the mark.

CIRCUIT DIAGRAM NOTICE:

1. All resistance value are in ohms, K=1,000, M=1,000,000.
2. All resistance rated wattages are 1/6W unless otherwise noted.
3. Excepting electrolytic capacitors, all capacitance values of less than 1 are expressed in μF and more than 1 are μF .
4. All capacitance rated voltages are 50V unless otherwise noted.
5. All inductance values are in μH .
6. This circuit diagram covers a basic or representative chassis only. There may be some components or partial circuit differences between the actual chassis and the circuit diagram.
7. Parts specified with "X" are not installed in this model.
8. Parts specified with "J" are just jumper wires.

Capacitance (Example)

1000 C M 2000 D

Characteristic
Capacitance value (220pF)
Allowable error ($\pm 20\%$)
Kind (Ceramic)
Rated voltage (1,000V)

Resistance (Example)

$1/2$ N $1/2$

Resistance value (1.2 Ω)
Allowable error ($\pm 5\%$)
Kind (M.carbon)
Rated wattage (1/2W)

J = $\pm 5\%$
K = $\pm 10\%$
M = $\pm 20\%$
T, A, U, D: Electrolytic
C, K, B: Ceramic
F: Mylar film
M, N: Polypropylene
Z: Metalized paper
D: Carbon
N: Metalized carbon
S: Oxided metalized
W: Wire wounding
C: Solid

